



# PRODUCT CATALOGUE

HEMATOLOGY  
CLINICAL CHEMISTRY  
URINALYSIS  
ELISA  
POINT OF CARE  
VETERINARY PRODUCTS

# INTRODUCTION

## About us...

### G.M. Foreword



**Dear Partners,**

*We are proud to present you NeoMedica - a dynamic European company specialized in developing and manufacturing IVD medical devices.*

*We focus on making continuous investments in key technologies, products and standards in the IVD field and are dedicated to providing safer, smarter, and more quality, user-friendly products, thereby creating a better experience for users.*

*Being present on the market worldwide for more than 17 years, we make no compromise when it comes to quality, safety and customers' satisfaction.*

*NeoMedica provides a wide range of high quality and innovative products in hematology, biochemistry, urinalysis and rapid screening testing fields in more than 80 countries all over the world.*

*Having in mind that being successful comes with a great responsibility to give back to others, NeoMedica manufactures cyanide-free, environment-friendly reagents.*

*Our products ensure inexpensive, fast and reliable diagnostics, essential for quality healthcare available for every member of the community.*

*Welcome to NeoMedica – excellence in your laboratory.*

*With regards,  
Mr Sasa Trickovic  
General Manager*

Boulevard Sv Cara Konstantina 82-86, 18000 Nis, SERBIA  
Tel. +381 (0)18 533 935, 533 936  
e-mail: [ivd@neomedica.rs](mailto:ivd@neomedica.rs); [www.neomedica.rs](http://www.neomedica.rs)

Visit us on  
**[www.neomedica.rs](http://www.neomedica.rs)**



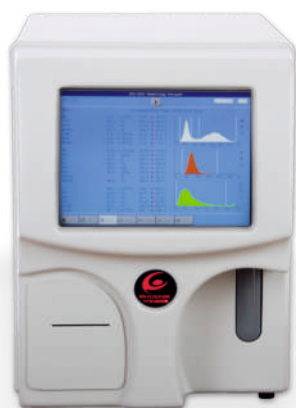
## HEMATOLOGY

HEMATOLOGY REAGENTS ..... Pg 4

HEMATOLOGY CONTROLS & CALIBRATORS ..... Pg10

3-Diff AUTOMATED HEMATOLOGY ANALYZERS ..... Pg12

5-Diff AUTOMATED HEMATOLOGY ANALYZERS ..... Pg16



**THE BEST QUALITY  
IN THE WORLD  
YOU CAN GET...**

**HEMATOLOGY**  
*For Life*



**NEOMEDICA** develops, reaserches, manufactures and markets a complete range of high quality dedicated hematology reagents for 3-part and 5-part differential hematology analyzers.

Our compatible hematology reagents reach the level of quality, stability and shelf life of the original reagents, supplied by the instrument's manufacturer.

By using Neomedica hematology reagents, you meet good performance and get the same accurate results.

Our hematology reagents are manufactured in an ISO 13485 certified facility, they are CE marked and meet the requirements of the IVD Directive 98/97/EC.

We offer a wide range of hematology reagents compatible with most known blood cell counters from:

**ABBOTT, ABX, NIHON KOHDEN, SYSMEX, BECKMAN COULTER, MINDRAY, MEDONIC, SWELAB, DIATRON, URIT, HYCEL, ORPHEE, RAYTO, etc.**

Note: If the catalogue involves any third-party name, it's instruments, models and so, used strictly for describing Neomedica's product uses.

Beside standard reagents offer, OEM and ODM customers are welcome.

3-diff reagents

5-diff reagents

Veterinary reagents

Control blood

OEM reagents

DRYPACK (Powder reagents)

Liquid concentrates

## UNIQUE FEATURES AND BENEFITS

Completely compatible with original reagents - no readjustment and recalibration needed

Excellent shelf life and long open-vial stability

Cyanide-free, eco-friendly substances

Cost-effective

We use the high quality chemistry to prevent microbial growth during the long shelf life

We use extra strong cardboard boxes to prevent damage and collapsing of heavy diluent containers



## Reagents for NEOMEDICA hematology analyzers

### Phoenix NCC-2310

N117105	Neo-Diluent AC	20L
N117103	Neo-Diluent AC	5L
N117313	Neo-R-Cleaner	5L
N117201	Neo-Lyser AC	500mL
N117401	Neo-EA-Clean	50mL
N117400	Neo-EA-Clean	100mL
N11411	Neo-Probe Cleaner	50mL
N114100	Neo-Probe Cleaner	100mL

### Phoenix NCC-3300

N128105	Neo Diluent C	20L
N128103	Neo-Diluent C	5L
N128305	Neo Detergent C	20L
N128303	Neo-Detergent C	5L
N128201	Neo Lyse C	1L
N128202	Neo Lyse C	500mL
N239301	Neo-Cleaner 100	100mL

### Phoenix NCC-5500 / NCC-51

N117145	Neo-U-Diluent	20L
N117143	Neo-U-Diluent	5L
N117325	Neo-Cleanser	20L
N117323	Neo-Cleanser	5L
N117125	Neo-U-Sheath	20L
N117123	Neo-U-Sheath	5L
N117212	Neo-Lyser-WHP	1L
N117211	Neo-Lyser-WHP	500mL
N11411	Neo-Probe Cleaner	50mL
N117222	Neo-U-Stain	4mL tube (reticulocyte)

### Phoenix NCC-61 / NCC-51 with autoloader

N117505	Neo-Diluent E	20 L
N117535	Neo-Cleaner E	20 L
N117525	Neo-Sheath E	20 L
N117502	Neo-Lyse E	1 L
N117500	Neo-Rinse E	100 mL

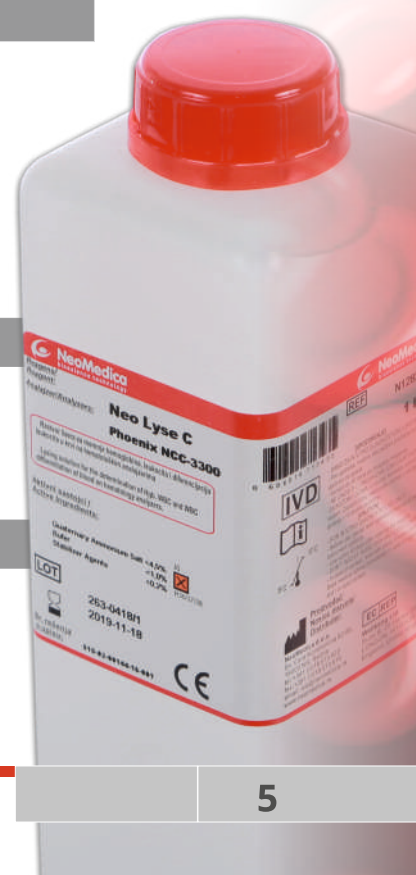
## NEOMEDICA Reagents for veterinary use

### Phoenix NCC-VET30 3-diff

N19105	Neo DW Diluent	20L
N19202	Neo DW Lyse	1L
N19415	Neo DW Klenz 1	20L
N19400	Neo Cleaner L	100mL

### Phoenix NCC-VET60 5-diff

N5250105-V	Neo Diluent B	20L
N5250201-V	Neo Lyse B	1L
N5250505-V	Neo Sheath B	20L
N5250305-V	Neo Detergent B	20L
N239301	Neo Cleaner 100	100mL



## Reagents for ABBOTT® hematology analyzers

### CD3000, CD3500, CD3700

N12145	Neo-Diluent CD5	20L
N12325	Neo-Detergent CD5	20L
N12233	Neo-WIC/HGB Lyse	3,8L
N122331	Neo-WIC/HGB Lyse	5L
N12164	Neo-Sheath	10L
N12165	Neo-Sheath	20L
N12400	Neo-EZ-Cleaner	50mL

### CD3200, Ruby

N12125	Neo-Diluent/Sheath	20L
N12212	Neo-WBC Lyse	1L
N12213	Neo-WBC Lyse	5L
N12223	Neo-HGB/NOC Lyse	3,8L
N122231	Neo-HGB/NOC Lyse	5L
N12400	Neo-EZ-Cleaner	50mL

### CD1400EX,CD1600,CD1700,CD1800

N12105	Neo-Diluent CD3	20L
N12305	Neo-Detergent CD3	20L
N12303	Neo-Detergent CD3	5L
N12203	Neo-Lyse CD3	5L
N12202	Neo-Lyse CD3	1L
N12400	Neo-EZ-Cleaner	50mL

### Emerald 3-diff (without barcode)

N25105	Neo Diluent MT	20L
N25202	Neo MT Lyse	1L
N25402	Neo Cleaner MT	1L

## Reagents for ABX HORIBA® hematology analyzers

### MICROS 60, MICROS ES60, 45/OT18,BAYER ADVIA 60 / Horiba LC550

N13105	Neo Diluent-M	20L
N13202	Neo M-Lyse	1L
N13302	Neo-Cleaner-M	1L
N13401	Neo-Cleaner-C	500mL

### PENTRA60, PENTRA 80

N13125	Neo-Diluent-P	20L
N13231	Neo-α-Lyse	400mL
N13222	Neo-EO-Lyse	1L
N13212	Neo-BA-Lyse 2	1L
N13312	Neo-Cleaner-P	1L
N13402	Neo-Cleaner-C	1L

### PENTRA60, PENTRA 120

N13125	Neo-Diluent-P	20L
N13231	Neo-α-Lyse	400mL
N13222	Neo-EO-Lyse	1L
N13241	Neo-BA-Lyse	5L
N13312	Neo-Cleaner-P	1L
N13402	Neo-Cleaner-C	1L



## Reagents for **BECKMAN COULTER**® hematology analyzers

### AcT 5diff, AcT 5diff AL, AcT 5diff OV

N14125	Neo-5Diff Diluent	20L
N14230	Neo-5Diff HGB Lyse	400mL
N14212	Neo-5Diff WBC Lyse	1L
N14222	Neo-5Diff Fix	1L
N14302	Neo-5Diff Rinse	1L

### LH-750, GENS-S, STKS, HmX, MAXM

N14105	Neo-Isotonic Diluent	20L
N14202	Neo-Lyse Diff	1L
N14444	Neo-Lyse Pack	1900mL+500mL
N14403	Neo-E-Cleaner	5L

### ACT-DIFF, ACT-DIFF 2

N14100	Neo-ACT Pack	15L+300mL
N14403	Neo-E-Cleaner	5L
NMCC1000	Reagent Card (COULTER CARD)	for 1000 tests

## Reagents for **DIATRON**® hematology analyzers

### DIATRON ABACUS

N18105	Neo-Diluent DA	20L
N18202	Neo-Lyse DA	1L
N18402	Neo-Cleaner DA	1L

## Reagents for **MINDRAY** hematology analyzers

### BC 3000, BC 3000+, BC 2800, BC 2600, BC 2300, BC 3200, BC 3600

N11105	Neo-Diluent BC3	20L
N11305	Neo-Rinse & HGB Ref	20L
N11313	Neo-Rinse & HGB Ref	5L
N11201	Neo-Lyse BC3	500mL
N11400	Neo-CE-Clean	100mL
N114100	Neo-Probe Cleaner	100mL



## Reagents for **SYSMEX®** hematology analyzers

### XE-2100, XT-1800i /2000i, XS-800i/1000i

N16105	Neo-Diluent-ST	20L
N16281	Neo-SLS Lyser	500mL
N16282	Neo-SLS Lyser	5L
N16263	Neo-4DN-Lyser	5L
N16260	Neo-4DS-Lyser	42ml
N16283	Neo-FB-Lyser	5L
N16401	Neo-CelN-Cleaner	100ml

### SF - 3000

N16105	Neo-Diluent-ST	20L
N16281	Neo-SLS Lyser	500mL
N16282	Neo-SLS Lyser	5L
N16283	Neo-FB-Lyser	5L
N16273	Neo-FD-I Lyser	5L
N16271	Neo-FD-II Lyser	500mL
N16401	Neo-CelN-Cleaner	100mL

### KX-21, POCH 100i, XP 300

N16105	Neo-Diluent-ST	20L
N16201	Neo-Lyser-WH	500mL
N16401	Neo-CelN-Cleaner	100mL

## Reagents for **NIHON KOHDEN®** hematology analyzers

### MEK-6318, 6400, 6420, 6410, 6510, 6500

N110105	Neo-Diluent NK	20L
N110303	Neo-Rinse NK	5L
N110301	Neo-Rinse NK	1L
N110211	Neo-Lysis NK	500mL
N110403	Neo-Cleanac NK	5L
N110401	Neo-Cleanac NK	1L

### MEK-8222,7222

N110105	Neo-Diluent NK	20L
N110303	Neo-Rinse NK	5L
N110211	Neo-Lysis NK	500mL
N110403	Neo-Cleanac NK	5L
N110201	Neo-Lyse NK	500mL

## Reagents for **MEDONIC BOULE®** hematology analyzers

### CA620, CA610, CA570, CA530, M-series 16/20, M32

N17105	Neo-Diluent CA	20L
N17203	Neo-Lyser CA	5L
N17204	Neo-Lyser CA	10L
N17403	Neo-Cleaner CA	5L

## Reagents for URIT<sup>®</sup> hematology analyzers

Urit 3000, 3000 plus, 3010, 2900, 2900 plus		
N121105	Neo Diluent 4	20L
N121202	Neo Lyse 4	1L
N121305	Neo Cleaner 4	20L
N11400	Neo-CE-Clean	100mL
N114100	Neo-Probe Cleaner	100mL

Urit 5500, 5250		
N123145	Neo Diluent F	20L
N123105	Neo Detergent F	20L
N123125	Neo Sheath F	20L
N123212	Neo Lyse F	1L
N117222	Neo-U-Stain	4mL tube (reticulocyte)
N114100	Neo-Probe Cleaner	100mL

## Reagents for RAYTO<sup>®</sup> hematology analyzers

Rayto RT-7600, RT-7600S, RT-7200		
N129105	Neo Diluent 1	20L
N129302	Neo Cleaner 1	1L
N129201	Neo Lyse 1	500mL
N239102	Neo Cleaner Strong	500mL

## Reagents for HUMAN<sup>®</sup> hematology analyzers

Humacount		
N124105	Neo Diluent 5	20L
N124202	Neo Lyse 5	1L
N124302	Neo Detergent 5	1L
N11400	Neo-CE-Clean	100mL
N114100	Neo-Probe Cleaner	100mL

## Reagents for ERMA<sup>®</sup> hematology analyzers

Erma PCE-210		
N118105	Neo Diluent 2	20L
N118202	Neo Lyse 2	1L
N118205	Neo Lyse 2	500mL
N118302	Neo Cleaner 2	1L
N118323	Neo Cleaner 2	5L
N11401	Neo-CE-Clean	50mL
N11411	Neo-Probe Cleaner	50mL

## Reagents for SWELAB BOULE<sup>®</sup> hematology analyzers

SWELAB 910, 920		
N17105-1	Neo-Diluent CA	20L
N17203-1	Neo-Lyser CA	5L
N17403-1	Neo-Cleaner CA	5L

## Reagents for ORPHEE<sup>®</sup> hematology analyzers

ORPHEE MYTHIC 18		
N15105	Neo-Diluent-MT	20L
N15202	Neo-MT-Lyse	1L
N15402	Neo-Cleaner-MT	1L

## HEMATOLOGY CONTROLS & CALIBRATORS

***Do you want to set up a total quality control in your laboratory ?***

NEOMEDICA DOO offers mono and multi-level hematology Whole Blood controls with 3-part and 5-part WBC differential and calibrators for all types of hematology analyzers used on worldwide market.

***ABBOTT, ABX, NIHON KOHDEN, SYSMEX, BECKMAN COULTER, MINDRAY, URIT, HYCEL, etc.***

Level 1 / Level 2 / Level 3 controls for Phoenix analyzer, both 3-diff and 5-diff.  
Calibrator is available in a separate package.

**Mono and multi-level packages** are adopted to fulfill customers needs

**Planned deliveries** in advance

Constant and **reliable technical assistance**

**Long open vial stability**



HC 1003 Neo Control N 1x3ml Hematology control (Normal level)  
HC 3003 Neo Control N 3x3ml Hematology control (Normal level)  
HC 6003 Neo Control N 6x3ml Hematology control (Normal level)  
HC 12003 Neo Control N 12x3ml Hematology control (Normal level)

HC 1103 Neo Control L 1x3ml Hematology control (Low level)  
HC 3103 Neo Control L 3x3ml Hematology control (Low level)  
HC 6103 Neo Control L 6x3ml Hematology control (Low level)  
HC 12003 Neo Control L 12x3ml Hematology control (Low level)

HC 1203 Neo Control H 1x3ml Hematology control (High level)  
HC 3203 Neo Control H 3x3ml Hematology control (High level)  
HC 6203 Neo Control H 6x3ml Hematology control (High level)  
HC 12203 Neo Control H 12x3ml Hematology control (High level)

HC 1303 Neo CBC Timepac 1x3ml Hematology Calibrator  
HC 3303 Neo CBC Timepac 3x3ml Hematology Calibrator  
HC 6303 Neo CBC Timepac 6x3ml Hematology Calibrator  
HC12303 Neo CBC Timepac 12x3ml Hematology Calibrator

**NEO Control N / L / H**  
**NEO CBC Timepac**





***Your trusted partner  
for more than 2 decades!***

## PHOENIX NCC-3300

Fully automated 3-diff Hematology Analyzer  
(60 samples / hour)

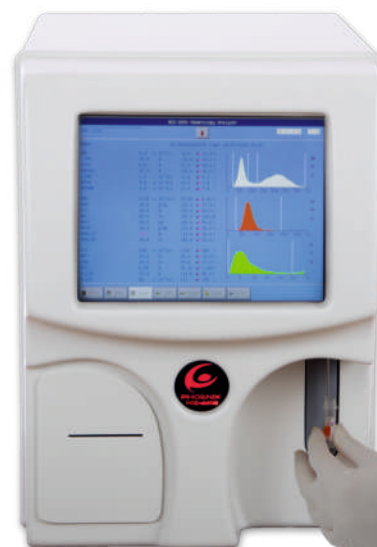


### The most advanced model of 3-Diff hematology analyzers

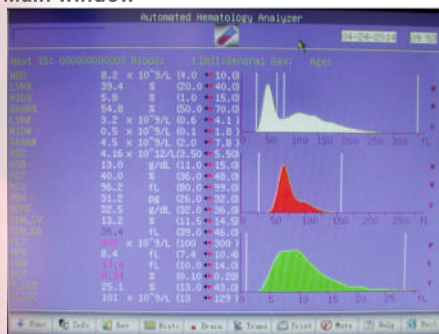
**Phoenix NCC-3300** is an ideal solution for small and medium-sized laboratories with its attractive design, user-oriented software and reliable performances. This is our most advanced 3-diff model characterized by fast and precise analysis and excellent cost-effectiveness.

With one of the lowest sample volumes on the market, this analyzer displays 24 parameters with 3 histograms in just 60 seconds and the results are printed on the quiet inbuilt thermal printer. The stable Linux operating system, sophisticated and easy-to-use software and a large colour touch screen are just some of the reasons why it is the first choice of laboratory professionals around the globe.

Our cyanide-free reagents with the new, improved formula guarantee low consumption and provide a great economic solution without neglecting the accuracy of the results and stability of the device.



Main window



## TECHNICAL SPECIFICATIONS

- Principle: Electrical impedance method for counting, HGB: Photoelectric colorimetry
- Parameter: 3-part differentiation of WBC
- Detected parameters as follows:  
WBC, LYM#, MID#, GRAN#, LYM%, MID%, GRAN%, RBC, HGB, HCT, MCV, MCH, MCHC, RDW-SD, RDW-CV, PLT, MPV, PDW, PCT, P-LCR, P-LCC
- Mode: Whole blood, Capillary, Prediluted
- 24 parameters including 3 histograms (WBC, RBC, PLT)
- Working mode: Double counting pathway and independent HGB detection system
- Sample volume: Whole blood 10 $\mu$ L, Pre-diluted 20 $\mu$ L
- Dimension of aperture: WBC: 100 $\mu$ m, RBC/PLT: 68 $\mu$ m
- General Throughput: 60 samples/hour
- 24 hour/day running continuous
- Auto stand-by
- Easy data back-up and system upgrade by USB
- Storage: Up to 100.000 sample results including histograms
- QC Mode: L-J, X, X-R, X-B
- Calibration mode: manual calibration and auto calibration
- Linux operating system
- High Quality touch screen: 10.4" LCD large LCD screen with touch function
- Dilution ratio:
 

	WBC/HGB	RBC/PLT
Whole blood	1:232	1:40000
Capillary blood	1:400	1:45000
- Power supply: AC100-240V~50/60Hz
- Interface: RS232 , standard network port and USB, integrated graphic thermal printer  
Parallel port and USB for external printer
- Report: Built-in rapid thermal recorder, optional external printer, 8 report formats
- Alarm and warnings: Reagent empty, Waste full, Reagent temperature abnormal, etc
- Supported languages: EN, RU, SR
- Dimensions: 330x530x460mm (WxDxH), 25kg

**Color TOUCH SCREEN**  
High accuracy and Fast Analysis

**Upgraded with**  
**Closed system of reagents**



Coefficient of Variation	Linearity Range
WBC $\leq$ 2.0%	WBC: 0.0x10 <sup>9</sup> /L - 99.9x10 <sup>9</sup> /L
RBC $\leq$ 1.5%	RBC: 0.1x10 <sup>12</sup> /L - 7.00x10 <sup>12</sup> /L
HGB $\leq$ 1.5%	HGB: 0 - 300 g/L
MCV $\leq$ 0.5%	PLT: 0x10 <sup>9</sup> /L -999x10 <sup>9</sup> /L
HCT $\leq$ 1.0%	
PLT $\leq$ 4.0%	

### Reagents for NCC-3300 hematology analyzers

Phoenix NCC-3300		
N128105	Neo Diluent C	20L
N128305	Neo Detergent C	20L
N128201	Neo Lyse C	1L
N239301	Neo Cleaner 100	100mL



## PHOENIX NCC-2310

**Fully automated 3-diff Hematology Analyzer  
( 60 samples / hour)**

### *Redesigned well proved model of 3-Diff hematology analyzers*

Phoenix NCC-2310 is a redesigned 3-diff model of Neomedica's automated hematology analyzers, user-oriented, easy to use with sophisticated software combined with large 8.4" touch screen.

High performance analysis of phoenix NCC-3300 displays 23 parameters with 3 histograms in just 60 seconds and prints results on a quiet, fast inbuilt thermal printer. Advanced electronics based on a stable Linux operating system, combined with precise mechanics ensure reliable hematology results. Cyanide-free reagents with improved formula allow low consumption, are cost efficient and require minimal maintenance.

Unique sweep flow technology to avoid recounting.

#### **TECHNICAL SPECIFICATIONS**

- Principle: Electrical impedance method for counting, HGB: Colorimetry method for hemoglobin
- Parameter: 3-part differentiation of WBC
- Detect parameter as follows:  
WBC, LYM#, MID#, GRAN#, LYM%, MID%, GRAN%, RBC, HGB, HCT, MCV, MCH, MCHC, RDW-SD, RDW-CV, PLT, MPV, PDW, PCT, P-LCR.
- 23 parameters including 3 histograms (WBC, RBC, PLT)

- Mode: Whole blood, Capillary, Prediluted Venous Blood Mode: 9.6μL Venous Blood Capillary Blood Mode: 9.6μL Capillary Blood Prediluted Mode: 20μL Capillary Blood
- Working mode: Double counting pathway and independent HGB detection system
- Dimension of aperture: WBC: 100μm, RBC/PLT: 80μm
- General Throughput: **60 samples/hour**
- 24 hour/day running continuous
- Auto stand-by
- Easy data back-up and system upgrade by USB
- Storage: Up to **50.000 sample results** including histograms
- QC Mode: L-J, X, SD, CV
- Calibration mode: 3 manual calibration and auto calibration
- Liquid Crystal Display (LCD), resolution: 640×480
- Dilution ratio:
 

	WBC/HGB	RBC/PLT
Venous and capillary blood	1:300	1:44600
Prediluted blood	1:355	1:44500



**Color TOUCH SCREEN**  
**High accuracy and Fast Analysis**



*Advanced technology at your fingertips...*

## TECHNICAL SPECIFICATIONS

- Interface: One power input socket, One VGA display port, One RS-232 serial port, Four USB interfaces, One Ethernet port, Linux software
- Report: Built-in rapid thermal recorder, optional external printer, 8 report formats
- Operating Ambient Temperature: 15-35°C, Hum 10-90%, Atmospheric pressure: 86.0 kPa~106.0 kPa
- Ambient Storage Temperature: -10-40°C, Hum ≤80%, Atmospheric pressure: 50.0 kPa~106.0 kPa
- Operation mode: Color Linux touch screen interface, mouse input
- Cross contamination ratio: WBC, RBC, HGB<0.5%, PLT<1%

Coefficient of Variation	Linearity Range
WBC≤2.5%	WBC: 0.0- 99.9x10 <sup>3</sup> /uL
RBC≤2.0%	RBC: 0.00- 9.99x10 <sup>6</sup> /uL
HGB≤1.5%	HGB: 0 - 30 g/dL
MCV≤0.4%	40-150fL
PLT≤5.0%	PLT: 0-999x10 <sup>3</sup> /uL

## REAGENTS

Innovative reagents with long shelf-life and improved packaging allow easy handling and extremely low consumption.

### Reagents for NCC-2310 hematology analyzer

Phoenix NCC-2310		
N117105	Neo Diluent AC	20L
N117313	Neo -R Cleaner	5L
N117201	Neo Lyser AC	500mL
N117400	Neo-EA Cleaner	100mL
N114100	Neo-Probe Cleaner	100mL

- Recorder: Rapid thermal Recorder, Internal printer, External printer supported
- Electric Specifications: Power Supply: AC 100~240V, 50±1Hz, The maximum input consumption is 150VA
- Dimensions: 325x380x430mm (WDXH), Weight: 23kg

**HQ large LCD Touch screen**

**Modern and reliable solution for small and mid-sized laboratories**

**Ideal for clinic labs and private practices**

**Low blood sample volume with 9.6μL**

**Linux interface, figure button, mouse input**

**Intelligent auto detection and maintenance program and intelligent float discriminator**

**Automatic cleaning of sample probe (inside and outside)**

**Automatic reagent residual alarm**

**PHOENIX**  
**NCC-2310**

**Reliable and Efficient.  
Compact, Economical and Perfect.**

## PHOENIX NCC-61

**Fully automated 5-diff Hematology Analyzer  
(60 samples / hour)**

*Neomedica's newest wonder: fast and precise 5-diff analysis in the body of a 3-diff device.*

- **Phoenix NCC-61** is one of the latest achievements from Neomedica in the field of hematology which has gained great attention from the date of its launching and which has already found its way on many markets.
- As one of the closed systems currently in our offer, this analyzer uses only 4 onboard reagents for 5-diff analysis (1 sheath) with RF cards which account for smooth operation and ensure precise results.
- Sophisticated flow cytometry technology, intelligent detection and maintenance mechanisms that facilitate handling and troubleshooting figure as key elements in the satisfaction of the customers, whose numbers rise by the day.
- The instrument provides a fast count and complete analysis including cell size, granularity and complexity. You only need to aspirate the whole blood samples and in only 60 sec scattergram and results are going to be displayed on the LCD screen.
- **Multi-dimensional cell classification by laser light**
- **Resistant RBC mode**
- **WIC and WOC for WBC counting**
- **Up to 60 samples per hour throughput**
- **WBC 5 part diff with sheath reagent only**

### MAIN ADVANTAGES

- **COMPACT**
- **FLOW CYTOMETRY LASER TECHNOLOGY**
- **RF CARD ensures reliable results**
- **4 Cyanide-free reagents**

*A closed system that will open many doors in small and medium-sized labs and big hospitals alike.*

### FEATURES:

PHOENIX NCC-61 uses semi-conductor laser for the flow cytometry system.

- Automatic cleaning of sample probe (inside and outside)
- Intelligent detection and maintenance
- LIS
- Resistant RBC mode
- Automatic reagent residual alarm
- Comprehensive QC program
- Cyanide-free reagents

HEMATOLOGY ANALYZERS



## TECHNICAL SPECIFICATIONS

- Tested parameters: 34 parameters  
WBC,LYM%,MON%,NEU%,EOS%,BASO%,LYM#,  
MON#,NEU#,EOS#,BAS#,RBC,HGB,HCT,MCV,MCH,  
MCHC,RDW\_CV,RDW\_SD,PLT,MPV,PDW,PCT,P\_LCR,  
P\_LCC,
- 6 Research parameters: ALY%, ALY#, LIC%, LIC#,  
NRBC%, NRBC#  
2 Histograms for RBC and PLT  
2 Scatter grams: 5-part differential scatter gram  
Eosinophils and Neutrophils scatter gram  
2 3D stereograms
- 3 reticulocyte** parameters:  
RETIC%,RETIC\_ABS, IRF
- Principles of operation:  
WBC/DIFF: Flow Cytometry, Semi-conductor,  
Laser light multi-dimensional cell classification  
WBC Analysis: Optical and impedance measurements  
RBC/PLT Analysis: Impedance method  
HGB test: Cyanide-free reagent colorimetry
- Sample: Whole blood 20μL, Pre-diluent 20μL
- Reagents: 4 cyanide free reagents onboard  
Diluent, Sheath, Detergent, Lyser
- Aperture diameter: WBC 100μm,  
RBC/PLT 68μm
- Throughput: up to 60 samples / hour
- Data storage: up to 200.000 results with  
grams
- Controls: LJ, X, XR, XB control mode etc.
- Double WBC counting mode (Impedance  
& Optical)
- Display: 10.4 inch with touch screen
- Error messages and pathological flaging
- Supported languages: EN,RU,ES,FR,PT
- Electric Specifications  
Power Supply: AC 100V~240V, 50/60Hz,  
Fuse 250V/3.15AH
- External printer supported
- Weight: 35kg

## REAGENTS

- Cyanide free reagents with long shelf-life and improved packaging allow easy handling and extremely low consumption.

### Reagents for NCC-61 hematology analyzers

CODE	PRODUCTS	PACK
N117505	Neo-Diluent E	20 L
N117535	Neo-Cleaner E	20 L
N117525	Neo-Sheath E	20 L
N117502	Neo-Lyse E	1 L
N117500	Neo-Rinse E	100 mL

Coefficient of Variation	Linearity Range
WBC ≤ 2.5%	WBC: 0.0- 99.9x10 <sup>3</sup> /uL
RBC ≤ 2.0%	RBC: 0.00- 9.99x10 <sup>6</sup> /uL
HGB ≤ 1.5%	HGB: 0 - 30 g/dL
MCV ≤ 0.4%	40-150fL
PLT ≤ 5.0%	PLT: 0-999x10 <sup>3</sup> /uL

4 determination methods:

- The **laser light method** for determining the quantity and Five-Part-Diff of WBC
- Electrical impedance method** for determining the quantity of RBC and PLT
- The **colorimetric method** for determining the content of HGB
- MCV,HCT,RDW,MPV,PDW,MCH,MCHC,PCT are obtained directly by calculating the stored data.

### RF ID Cards



**Reliable and Efficient.**  
**Compact, Economical and Perfect.**

## PHOENIX NCC-51

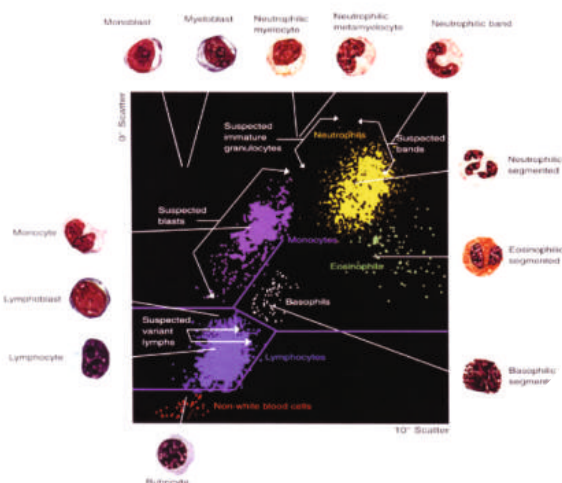
*Fully automated 5-diff Hematology Analyzer  
(60 samples / hour)*



### with RETICULOCYTE Analysis

- Phoenix NCC-51 automated hematology analyzer is one of the most advanced model in a wide range of Neomedica hematology analyzers. Characterized by simplicity in operation it provides cost-effective, precise, fast and accurate 5-part differential results.
- Through calculations of different angles via laser scatters, the instrument provides complete analysis including cell size, granularity and complexity.
- The instrument provides a fast count. You only need to put the whole blood samples and in only 60 sec. three-dimensional graphic data and results are going to be displayed on LCD screen.

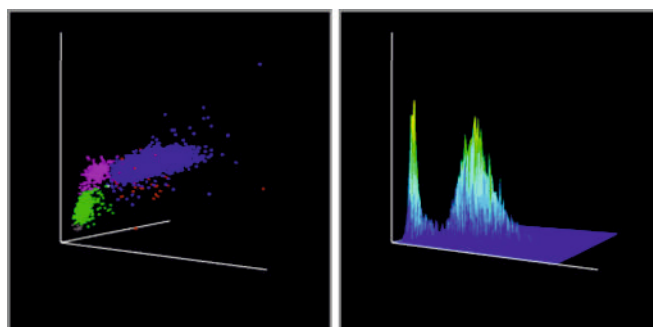
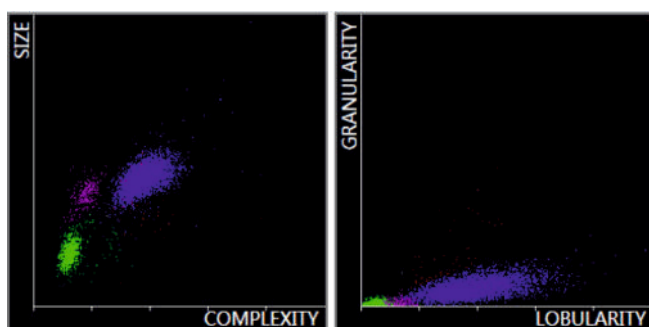
### 5-part differential scatter gram



### FEATURES:

- PHOENIX NCC-51 uses semi-conductor laser for the flow cytometry system.
- Automatic cleaning of sample probe (inside and outside)
- Intelligent detection and maintenance
- Automatic reagent residual alarm
- LIS
- Resistant RBC mode
- Comprehensive QC program
- Cyanide-free reagents

### Three-dimensional Plot





## TECHNICAL SPECIFICATIONS

- Tested parameters: 34 parameters  
WBC,LYM%,MON%,NEU%,EOS%,BASO%,LYM#,  
MON#,NEU#,EOS#,BAS#,RBC,HGB,HCT,MCV,MCH,  
MCHC,RDW\_CV,RDW\_SD,PLT,MPV,PDW,PCT,P\_LCR,  
P\_LCC,  
6 Research parameters: ALY%, ALY#, LIC%, LIC#,  
NRBC%, NRBC#  
3 **reticulocyte** parameters:  
RETIC,RETIC\_ABS, IRF
- Principles of operation:  
WBC/DIFF: Flow Cytometry, Semi-conductor,  
Laser light multi-dimensional cell classification  
WBC Analysis: Optical and impedance measurements  
RBC/PLT Analysis: Impedance method  
HGB test: Cyanide-free reagent colorimetry
- Sample: Whole blood 20µL, Pre-diluent 20µL
- Reagents: **4 cyanide free reagents** onboard  
Diluent, Sheath,Detergent, Lyser
- Windows operating system
- 2 Histograms for RBC and PLT  
2 Scatter grams: 5-part differential Eosinophils  
and Neutrophils scatter gram  
2 **3-D Stereograms**
- Throughput: up to 60 samples / hour
- Aperture diameter: WBC 100µm,  
RBC/PLT 68µm
- Controls: LJ, X, XR, XB control mode etc.
- Data storage: More than 200.000 sample  
results with grams
- Double** WBC counting mode (Impedance  
& Optical)
- Display: PC display (14 inch color TFT)  
Bi-directional LIS and Barcode Reading
- Resistant RBC mode
- 3 Calibration modes: Automatic Calibration,  
Whole Blood Calibration and Manual Calibration
- Supported languages: EN,RU,ES,FR,PL,PT
- Electric Specifications  
Power Supply: AC 100V~240V, 50/60Hz,  
Fuse 250V/3.15AH
- Automatic reagent residual alarm
- Dimensions: 560x595x500mm (WDXH),  
Weight: 70kg, Gross weight: 145 kg

## REAGENTS

- Cyanide free reagents with long shelf-life and  
improved packaging allow easy handling and  
extremely low consumption.

### Reagents for NCC-51 hematology analyzers

CODE	PRODUCTS	PACK
N117145	Neo-U-Diluent	20 L
N117325	Neo-Cleanser	20 L
N117125	Neo-U-Sheath	20 L
N117212	Neo-Lyser-WHP	1 L
Reticulocyte:		
N117222	Neo-U-Stain	4mL

**PC DISPLAY**  
**34 parameters**  
**2 Histograms**  
**2 Scatter grams**  
**2 3-D stereograms**

4 determination methods:

- The **laser light method** for determining the quantity and  
Five-Part-Diff of WBC
- Electrical impedance method** for determining the  
quantity of RBC and PLT
- The **colorimetric method** for determining the content of  
HGB
- MCV,HCT,RDW,MPV,PDW,MCH,MCHC,PCT are obtained  
directly by calculating the stored data.

Coefficient of Variation	Linearity Range
WBC ≤ 1.5%	WBC: 0.0x10 <sup>9</sup> /L - 99.9x10 <sup>9</sup> /L
RBC ≤ 1.0%	RBC: 0.1x10 <sup>12</sup> /L - 7x10 <sup>12</sup> /L
HGB ≤ 1.5%	HGB: 0 - 300 g/dL
MCV ≤ 1.0%	
HCT ≤ 2.0%	PLT: 0x10 <sup>9</sup> /L - 999x10 <sup>9</sup> /L
PLT ≤ 4.0%	

**Reliable and Efficient.**  
**Compact, Economical and Perfect.**

## ***PHOENIX NCC-51 with Autoloader***

***Fully automated 5-diff Hematology Analyzer  
(up to 60 samples / hour)***

**Phoenix NCC-51** automated hematology analyzer equipped with an autoloader is one of the most advanced models in wide range of Neomedica hematology analyzers.

Characterized by simplicity in operation it provides cost-effective, precise, fast and accurate 5-part differential results.

- Through calculations of different angles via laser scatters, the instrument provides complete analysis including cell size, granularity and complexity.
- The instrument provides a fast count with continuous sampling of 50 pcs per batch, and can process the emergency sample test any time. Three-dimensional graphic data and results are going to be displayed on LCD screen.

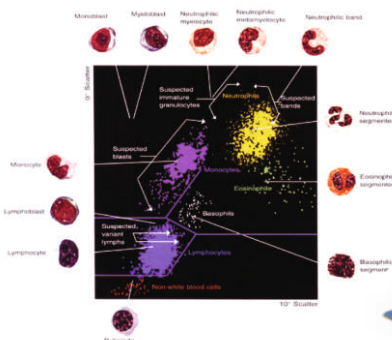


**with RETICULOCYTE Analysis**

### **FEATURES:**

- PHOENIX NCC-51 with autoloader uses semi-conductor laser for the flow cytometry system.
- Automatic cleaning of sample probe (inside and outside)
- Intelligent detection and maintenance
- Automatic reagent residual alarm
- LIS
- Resistant RBC mode
- Comprehensive QC program
- Cyanide-free reagents

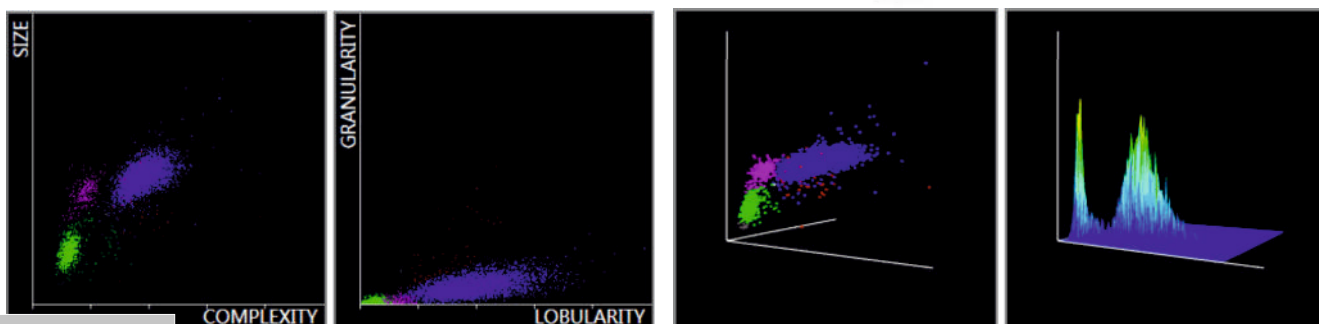
### **5-part differential scatter gram**



**RF ID Cards available**



**Three-dimensional Plot**



## TECHNICAL SPECIFICATIONS

- Tested parameters: 34 parameters  
WBC,LYM%,MON%,NEU%,EOS%,BASO%,LYM#,  
MON#,NEU#,EOS#,BAS#,RBC,HGB,HCT,MCV,MCH,  
MCHC,RDW\_CV,RDW\_SD,PLT,MPV,PDW,PCT,P\_LCR,  
P\_LCC,  
3 **reticulocyte** parameters: RETIC,RETIC\_ABS, IRF  
6 Research parameters: ALY%, ALY#, LIC%, LIC#,  
NRBC%, NRBC#
- Principles of operation:  
WBC/DIFF: Flow Cytometry, Semi-conductor,  
Laser light multi-dimensional cell classification  
WBC Analysis: Optical and impedance measurements  
RBC/PLT Analysis: Impedance method  
HGB test: Cyanide-free reagent colorimetry
- Sample: Whole blood 20µL, Pre-diluent 20µL
- Enclosed puncture sampling, continuous sampling,  
50 pcs of samples processing per batch, emergency  
sample test performed at any time
- Reagents: **4 cyanide free reagents** onboard  
Diluent, Sheath,Detergent, Lyser
- Windows operating system
- 2 Histograms for RBC and PLT  
2 Scatter grams: 5-part differential Eosinophils  
and Neutrophils scatter gram  
2 **3-D Stereograms**
- Throughput: up to 60 samples / hour  
50 autoloader positions
- Aperture diameter: WBC 100µm,  
RBC/PLT 68µm
- Controls: LJ, X, XR, XB control mode etc.
- Data storage: Up to 200.000 sample  
results with grams
- Supported languages: EN,RU,ES,FR,PL,PT
- Double** WBC counting mode (Impedance  
& Optical)
- Display: PC display (14 inch color TFT)  
Bi-directional LIS and Barcode Reading
- Resistant RBC mode
- 3 Calibration modes: Automatic Calibration,  
Whole Blood Calibration and Manual Calibration
- Output: External printer, option to print the  
histogram. Different warning alarms announce  
probable abnormalities of specimens.
- Electric Specifications  
Power Supply: 220V, 50/60Hz, 300VA  
Fuse 250V/3.15AH
- Automatic reagent residual alarm
- Dimensions: 660x560x545mm (WDXH),  
Weight: 73kg

## REAGENTS

- Cyanide free reagents with long shelf-life and  
improved packaging allow easy handling and  
extremely low consumption.

### Reagents for NCC-51 hematology analyzers

CODE	PRODUCTS	PACK
N117505	Neo-Diluent E	20 L
N117535	Neo-Cleaner E	20 L
N117525	Neo-Sheath E	20 L
N117502	Neo-Lyse E	1 L
N117500	Neo-Rinse E	100 mL

### Reticulocyte:

N117222 Neo-U-Stain 4mL

**PC DISPLAY**  
34 parameters  
2 Histograms  
2 Scatter grams  
2 3-D stereograms

### 4 determination methods:

- The **laser light method** for determining the quantity and  
Five-Part-Diff of WBC
- Electrical impedance method** for determining the  
quantity of RBC and PLT
- The **colorimetric method** for determining the content of  
HGB
- MCV,HCT,RDW,MPV,PDW,MCH,MCHC,PCT are obtained  
directly by calculating the stored data.

Coefficient of Variation	Linearity Range
WBC ≤ 1.5%	WBC: 0.0x10 <sup>9</sup> /L - 99.9x10 <sup>9</sup> /L
RBC ≤ 1.0%	RBC: 0.1x10 <sup>12</sup> /L - 7x10 <sup>12</sup> /L
HGB ≤ 1.5%	HGB: 0 - 300 g/dL
MCV ≤ 1.0%	
HCT ≤ 2.0%	PLT: 0x10 <sup>9</sup> /L - 999x10 <sup>9</sup> /L
PLT ≤ 4.0%	

**Reliable and Efficient.  
Compact, Economical and Perfect.**

\*Information may vary among different software version of unit.

## PHOENIX NCC-5500

*Fully automated 5-diff Hematology Analyzer (110 samples / hour)*

*High speed, secure and accurate solution for your lab.* with **RETIC** Analysis

- **Phoenix NCC-5500** fully automated hematology analyzer is the most advanced model in a wide range of Neomedica hematology analyzers. Characterized by simplicity in operation it provides cost-effective, precise and accurate 5-part differential results.
- The instrument provides a fast count, all operations (including sampling, measurement and results output) are fully automated. You only need to put the whole blood samples on the test tube rack and in less than a minute three-dimensional graphic data and results will be displayed in the LCD screen.
- The instrument is able to perform sampling and rinsing of the residual blood on the sample aspiration probe, thus avoiding contact with the samples. This feature ensures maximal security for the operator.
- The unit contains the possibility to track and monitor the quantity of reagent remaining. High throughput load
- This analyzer is an ideal solution for high-end hospitals, laboratories and clinics that look for more advanced technology, reliable, safe, accurate and easy-to-use instrumentation.

### MAIN ADVANTAGES

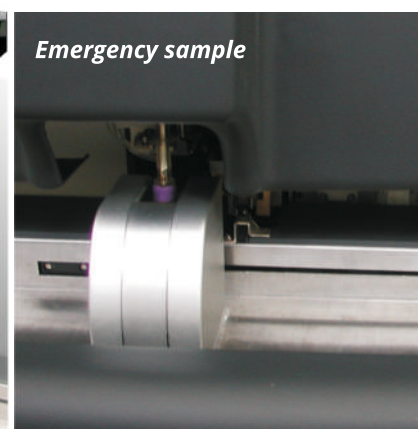
- Rotary shear valve
- LED light source, 540nm wavelength colorimetry
- Just 4 cyanide-free reagents
- Automatic mixing of samples

### FEATURES

- PHOENIX NCC-5500 uses semi-conductor laser for the flow cytometry system
- Automatic cleaning of sample probe (inside and outside)
- Intelligent detection and maintenance
- Automatic reagent residual alarm
- LIS
- Resistant RBC mode
- Comprehensive QC program
- Avoid direct contact with samples and assure safety



*Auto-loader, 120 samples*



*Emergency sample*



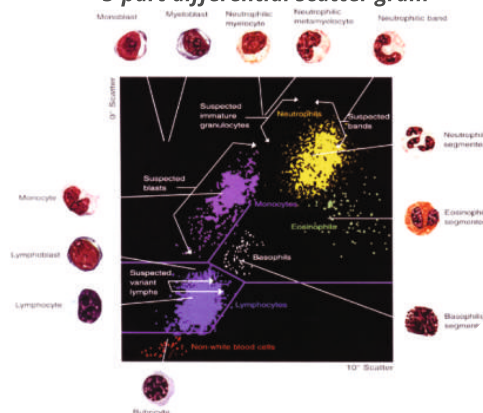
## TECHNICAL SPECIFICATIONS

- 34 parameters  
3D plot, scattergrams, histograms
- Detected parameters:  
WBC, LYM%, MON%, NEU%, EOS%, BAS%, LYM#,  
MON#, NEU#, EOS#,BAS#, RBC, HGB, HCT, MCV,  
MCH, MCHC, RDW\_CV, RDW\_SD, PLT, MPV, PDW,  
PCT, P\_LCR,P\_LCC  
3 reticulocyte parameters: RETIC%,RETIC\_ABS, IRF  
6 Research parameters: ALY%, ALY#, LIC%, LIC#,  
NRBC%, NRBC#
- Windows operating system
- Sampling modes:  
Autoloader 50 $\mu$ L, manual (emergency) 50 $\mu$ L,  
Pre-diluted mode 40 $\mu$ L
- Throughput  
Autoloader: up to 110 samples per hour  
Manual mode: up to 100 samples /hour

Coefficient of Variation	Linearity Range
WBC $\leq$ 1.5%	WBC: 0.0x10 <sup>9</sup> /L - 99.9x10 <sup>9</sup> /L
RBC $\leq$ 1.0%	RBC: 0.1x10 <sup>12</sup> /L - 7x10 <sup>12</sup> /L
HGB $\leq$ 1.5%	HGB: 0 - 300 g/dL
MCV $\leq$ 1.0%	
HCT $\leq$ 2.0%	PLT: 0x10 <sup>9</sup> /L - 999x10 <sup>9</sup> /L
PLT $\leq$ 4.0%	

- Autoloader: Automatic sampling device with a capacity of 120 samples
- Controls: LJ, X, XR, XB control mode etc.
- 3 Calibration modes: Automatic Calibration, Whole Blood Calibration, and Manual Calibration
- Data storage: more than 200.000 sample results with grams
- Supported languages: EN,RU,ES,FR,PL,PT
- Display: PC display with Windows system  
Bi-directional LIS and Barcode Reading
- Automatic reagent residual alarm
- Dimensions: 670mm(H)x790mm(L)x690mm(W)  
Weight: 91,5 kg, Gross weight 210 kg

### 5-part differential scatter gram

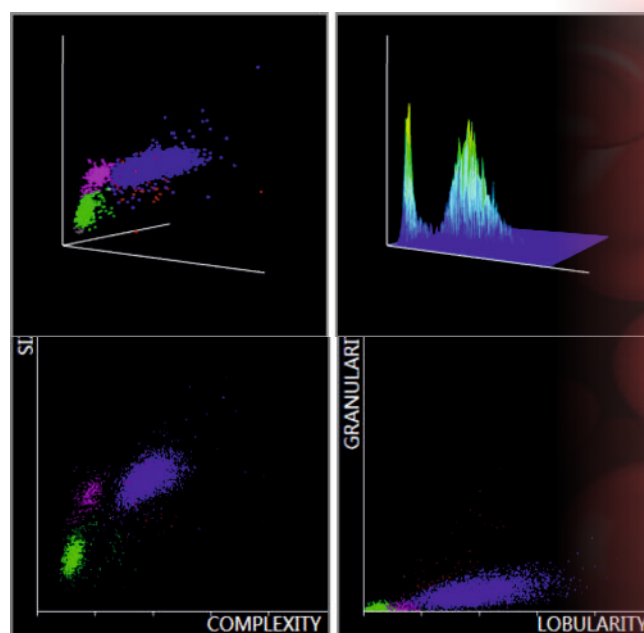


- Emergency sample testing**
- Special intelligent recognition test tube bar coded rack allows continuous sampling.
- Two units (WOC & WIC) for selection of WBC, RBC, HGB, PLT and other elements and parameters.
- A batch of 120 samples can be handled at a time, and the emergency sample can be inserted at any time.

4 determination methods:

- The **laser light method** for determining the quantity and Five-Part-Diff of WBC
- Electrical impedance method** for determining the quantity of RBC and PLT
- The **colorimetric method** for determining the content of HGB
- MCV,HCT,RDW,MPV,PDW,MCH,MCHC,PCT are obtained directly by calculating the stored data.

### Three-dimensional Plot





**NeoMedica**  
bioscience technology



## CLINICAL CHEMISTRY REAGENTS

I. CLINICAL CHEMISTRY REAGENTS	Pg 26
II. TURBIDIMETRY and LATEX	Pg 31
III. AGGLUTINATION	Pg 33
IV. COAGULATION	Pg 33
V. QUALITY CONTROLS & CALIBRATORS	Pg 34

## CLINICAL CHEMISTRY ANALYZERS Pg 36

### ION SELECTIVE ANALYZERS Pg 47

### COAGULATION ANALYZERS Pg 49

NEOMEDICA DOO is committed to providing you the complete high quality clinical chemistry products, which include:

- Chemistry analyzers from the NeoChem series: for performing the analysis and calculating results;
- Chemistry reagents: dedicated biochemistry reagents to be used together with NeoChem analyzers and generate results according to standardized methodology and technology;  
Reagents can be used in open systems and for manual work.
- Controls - Human matrix: to be used for the standardization of results.

In order to simplify your routine work NEOMEDICA DOO has developed in its product range high-quality ready-to-use biochemistry reagents.

Our proven high performance quality products are competing with the highest standards on the market.

Beside the standard reagents' offer, OEM and ODM customers are welcome.



## High-Quality, Cost-Effective Biochemistry reagents

- NEOMEDICA DOO offers you a **complete CE marked clinical chemistry reagent panel**
- Cost Saving - minimal dead volume and **optimized R1/R2 reagent ratio**
- **Wide range of biochemistry analyse** with several different methods
- **Reliable results** - superior liquid stability, large linearity range, easy to use
- **Original quality controls and calibrators** ensure precise results of analysis
- **Distinctive and modern package design** - resistant to moisture and wear, adjusted to customers' needs
- **Application for open biochemistry systems**

### CLINICAL CHEMISTRY

#### ACID AND PROSTATIC PHOSPHATASE

NB11203	R1: 18 x 2ml R2: 18 in 2ml R3:1 x 1ml	a-Naphtyl phosphate. Kinetic
---------	---------------------------------------	------------------------------

#### ALBUMIN

NB11211	R1: 1 x 500ml	BCG (Ready to use)
NB11212	R1: 1 x 100ml	BCG (Ready to use)
NB11213	R1: 2 x 50ml	BCG (Ready to use)

#### ALKALINE PHOSPHATASE

NB11224	R1: 1 x 80ml R2: 1 x 20mL	AMP (IFCC) liq.
NB11225	R1: 1 x 200ml R2: 1 x 50mL	AMP (IFCC) liq.
NB11226	R1: 1 x 400ml R2: 1 x 100mL	AMP (IFCC) liq.

#### ALKALINE PHOSPHATASE

Nb11231	R1:6x40ml, R2:6X10ml	DEA(DGKC)
Nb11232	R1:1x80ml, R2:1X20ml	DEA(DGKC)

#### ALPHA AMILASE SL

NB11242	R1: 10x10 ml	CNPG3 mono
NB11243	R1: 4x30 ml	CNPG3 mono
NB11244	R1: 10x10 ml	CNPG3. Kinetic. Liquid
NB11245	R1: 4x30 ml	CNPG3. Kinetic. Liquid

#### ALT/GPT-SL

NB11250	R1: 1x400 ml R2: 1x100 ml	IFCC
NB11251	R1: 1x1000 ml R2: 1x 250 ml	IFCC
NB11252	R1: 1x200 ml R2: 1x50 ml	IFCC

#### AST/GOT-SL

NB11260	R1: 1x400 ml R2: 1x100 ml	IFCC
NB11261	R1: 1x1000 ml R2: 1x 250 ml	IFCC
NB11262	R1: 1x200 ml R2: 1x50 ml	IFCC



**AMMONIUM UV**

NB11270	R1: 10x10 ml R4: 1x1 ml + CTL 2x1 ml	GLDH
---------	--------------------------------------	------

**BILIRUBIN DIRECT**

NB11280	R1: 1x400 ml R2: 1x100 ml	Jendrassik-Grof
NB11281	R1: 4x40 ml R2: 4x10 ml	Jendrassik-Grof

**BILIRUBIN TOTAL (B)**

NB11290	R1: 1x400 ml R2: 1x100 ml	Jendrassik-Grof
NB11291	R1: 4x40 ml R2: 4x10 ml	Jendrassik-Grof

**BILIRUBIN (TOTAL AND DIRECT)**

NB11300	R1a: 4x40 ml R2a: 4x10 ml R1b: 4x40 ml R2b: 4x10 ml	Jendrassik-Grof
---------	-----------------------------------------------------	-----------------

**CALCIUM ARS**

NB11321	R1: 6x100 ml	Arsenazo mono
NB11322	R1: 6 x 50 ml	Arsenazo mono

**CALCIUM**

NB11319	R1: 3x100 ml R2: 3x100 ml	CPC
NB11320	R1: 3x50 ml R2: 3x50 ml	CPC
NB11323	R1: 2x50 ml R2: 2x50 ml	CPC

**CHLORIDE**

NB11330	R1: 2x60 ml	Mercury-thiocyanate
---------	-------------	---------------------

**CHOLESTEROL HDL DIRECT**

Nb11342	R1: 1x60 ml R2: 1x20 ml	Clearance
---------	-------------------------	-----------

**CHOLESTEROL LDL DIRECT**

NB11355	R1: 1x60 ml R2: 1x20 ml	Enzymatic colorimetric
---------	-------------------------	------------------------

**CHOLESTEROL HDL PRECIPITATING REAGENT**

NB11360	R1: 4x5 ml (200 T)	Precipitant
---------	--------------------	-------------

**CHOLESTEROL TOTAL SL**

NB11381	R1: 1x1000 ml	CHOD-PAP
NB11382	R1: 1x 500 ml	CHOD-PAP
NB11383	R1: 1x250 ml	CHOD-PAP

### CHOLINESTERASE

NB11390	R1: 5x20 ml R2: 2x10 ml	Butyryl (DGKC)
---------	-------------------------	----------------

### CK-MB

NB11400	R1: 1x40 ml R2: 1x10 ml	Immunoinhibition
NB11401	R1: 1x40 ml R2: 1x10 ml	Immunoinhibition

### CK-NAC SL

NB11410	R1: 4x16 ml R2: 4x4 ml	DGKC-IFCC
NB11411	R1: 1x40 ml R2: 1x10 ml	DGKC-IFCC
NB11412	R1: 2x80 ml R2: 2x20 ml	DGKC-IFCC

### COPPER SL

Nb11420	R1: 3X50ml, R2: 3x50ml	DBP Colorimetric
---------	------------------------	------------------

### CREATININE

NB11430	R1: 2x50 ml R2: 2x50 ml	Jaffe without deproteinization
NB11432	R1: 1x500 ml R2: 1x500 ml	Jaffe without deproteinization



### GAMMA GT

NB11440	R1: 6x40 ml R2: 6x10 ml	Carboxy substrate
NB11441	R1: 1x200 ml R2: 1x50 ml	Carboxy substrate

### GLUCOSE SL

NB11451	R1: 1x1000 ml	GOD-POD
NB11452	R1: 1x500 ml	GOD-POD
NB11453	R1: 1x250 ml	GOD-POD

**HOMOCYSTEINE SL**

NB11461	R1: 1x30 ml R2: 1x5 ml + CAL 2x3 ml	Enzymatic UV
NB11462	R1: 1x30 ml R2: 1x5 ml	Enzymatic UV

**IRON F**

NB11470	R1: 4x40 ml R2: 4x10 ml + STD	Ferene
NB11471	R1: 4 x 50 mL, R2: 4 x 500 mg, R3: 2 x 10 ml + STD	Ferrozine

**LACTATE**

NB11482	R1: 1x50 ml R2: 5x10 ml + STD 1x5 ml	Enzymatic (Colorimetric)
---------	--------------------------------------	--------------------------

**LDH-p SL**

NB11492	R1: 1x80 ml R2: 1x20 ml	Kinetic UV, DGKC. Liquid
NB11493	R1: 1x160 ml R2: 1x40 ml	Kinetic UV, DGKC. Liquid

**MAGNESIUM**

NB11503	R1: 6x30 ml	Xylidyl Blue
NB11504	R1: 6x50 ml	Xylidyl Blue

**PHOSPHORUS UV**

NB11510	R1: 4x30 ml	Molybdate
NB11511	R1: 6x50 ml	Molybdate

**TOTAL PROTEINS**

NB11521	R1: 1x1000 ml	Biuret (ready to use, monoliquid)
NB11522	R1: 1x 500 ml	Biuret (ready to use, monoliquid)
NB11523	R1: 2x100 ml	Biuret (ready to use, monoliquid)

**PROTEIN (URINE)**

NB11530	R1: 6x50 ml + STD	Pyrogallol Red
NB11531	R1: 6x30 ml + STD	Pyrogallol Red

**TIBC-UIBC**

NB11536	100 tests	Precipitation with Mg-carbonate
---------	-----------	---------------------------------

**TRYGLYCERIDES SL**

NB11540	R1: 1x1000 ml	GPO-PAP monoliquid
NB11541	R1: 1x 500 ml	GPO-PAP monoliquid
NB11542	R1: 2x100 ml	GPO-PAP monoliquid

### UREA UV SL

NB11550	R1: 1x400 ml R2: 1x100 ml	Kinetic Urease-GLDH
NB11551	R1: 1x200 ml R2: 1x50 ml	Kinetic Urease-GLDH
NB11556	R1: 1x1000 ml R2: 1x250 ml	Kinetic Urease-GLDH
NB11557	R1: 1x150 ml R2:1x150 ml R3: 1	Berthelot. Enzymatic colorimetric
NB11558	R1: 1x250 ml R2:1x250 ml R3: 1	Berthelot. Enzymatic colorimetric

### URIC ACID SL

NB11571	R1: 1x250 ml R2: 1x250	Uricase-POD
NB11570	R1: 1x100 ml; R2:1x100 ml +STD	Uricase-POD

### SODIUM

Nb11604	R1: 2X40ml, R2: 2x20m+CAL 2 level	Enzymatic
---------	-----------------------------------	-----------

### POTASSIUM

NB12121	R1: 4X30ml	Turbidimetric
---------	------------	---------------

### LITHIUM

NB11590	R1: 2x20 ml R2: 2x10 ml + CAL 3x3 ml	Enzymatic
NB11591	R1: 1x20 ml R2: 1x10 ml + CAL 3x1,5 ml	Enzymatic

### ZINC SL

NB11582	R1: 5x10 ml R2: 1x5 ml R3: 1 powder+CAL 1x5 ml	5-Br-PAPS
---------	------------------------------------------------	-----------

### VANILMANDELIC ACID

20T	Ion exchange
-----	--------------





## TURBIDIMETRY

### ASO-Q

NB12130	R1: 1x40 ml R2: 1x10 ml + CAL	Turbidimetry
NB12131	R1: 1x80 ml R2: 1x20 ml + CAL	Turbidimetry
NB12132	R1: 4x40 ml R2: 4x10 ml + CAL	Turbidimetry
NB12133	R1: 1x40 ml R2: 1x10 ml	Turbidimetry

### CRP

NB12144	R1: 1x40 ml R2: 1x10 ml	Turbidimetry
NB12145	R1: 1x40 ml R2: 1x10 ml + CAL	Turbidimetry
NB12146	R1: 1x80 ml R2: 1x20 ml + CAL	Turbidimetry

### RF-Q

NB12152	R1: 1x40 ml R2: 1x10 ml	Turbidimetry
NB12153	R1: 1x40 ml R2: 1x10 ml + CAL	Turbidimetry
NB12154	R1: 1x80 ml R2: 1x20 ml + CAL	Turbidimetry

### HbA1c

NB12180	R1: 1x30 ml R2: 1x10 ml R3: 1x125 ml	Direct Turbidimetry
---------	--------------------------------------	---------------------

### ALPHA 1 ANTITRYPSIN

NB12190	R1: 1x40 ml R2: 1x10 ml	Immunoturbidimetric
NB12191	R1: 2x40 ml R2: 2x10 ml	Immunoturbidimetric

### FRUCTOSAMINE SL

NB12201	R1: 6x10 ml	Colorimetric NBT
NB12202	R1: 6x30 ml	Colorimetric NBT

### ANTITHROMBIN III

NB12221	R1: 1x40 ml R2: 1x10 ml	Immunoturbidimetric
---------	-------------------------	---------------------

### APO A1

NB12230	R1: 1x40 ml R2: 1x10 ml	Immunoturbidimetric
---------	-------------------------	---------------------

### APO B

NB12240	R1: 1x40 ml R2: 1x10 ml	Immunoturbidimetric
---------	-------------------------	---------------------

### HAPTOGLOBIN

NB12250	R1: 1x40 ml R2: 1x10 ml	Immunoturbidimetric
---------	-------------------------	---------------------

### CERULOPLASMIN

NB12260	R1: 1x40 ml R2: 1x10 ml	Immunoturbidimetric
---------	-------------------------	---------------------

**C3**

NB12271	R1: 1x40 ml R2: 1x10 ml	Immunoturbidimetric
---------	-------------------------	---------------------

**C4**

NB12281	R1: 1x40 ml R2: 1x10 ml	Immunoturbidimetric
---------	-------------------------	---------------------

**LIPOPROTEIN (A)**

NB12290	R1: 1x40 ml R2: 1x10 ml	Immunoturbidimetric
---------	-------------------------	---------------------

**IGA**

NB12301	R1: 1x40 ml R2: 1x10 ml	Immunoturbidimetric
---------	-------------------------	---------------------

**IGG**

NB12311	R1: 1x40 ml R2: 1x10 ml	Immunoturbidimetric
---------	-------------------------	---------------------

**IGM**

NB12320	R1: 1x40 ml R2: 1x10 ml	Immunoturbidimetric
---------	-------------------------	---------------------

**IGE**

NB12331	R1: 1x40 ml R2: 1x10 ml	Immunoturbidimetric
---------	-------------------------	---------------------

**MICROALBUMIN**

NB12341	R1: 1x40 ml R2: 1x10 ml + CAL 1x1 ml	Immunoturbidimetric
---------	--------------------------------------	---------------------

**PREALBUMIN**

NB12350	R1: 1x40 ml R2: 1x10 ml	Immunoturbidimetric
---------	-------------------------	---------------------

**TRANSFERRIN**

NB12361	R1: 1x40 ml R2: 1x10 ml	Immunoturbidimetric
---------	-------------------------	---------------------

**FERRITIN**

NB12370	R1: 1x40 ml R2: 1x10 ml + CAL 1x3 ml	Turbidimetric
---------	--------------------------------------	---------------

**MICROGLOBULINA B2**

NB12381	R1: 1x40 ml R2: 1x10 ml + CAL 1x1 ml	Immunoturbidimetric
---------	--------------------------------------	---------------------

**VITAMIN D**

NB12400	R1: 1x9 ml R2: 1x18 ml R3: 1x9 ml R4: 1x18 ml R5: 5x1 ml	Enzymatic
---------	----------------------------------------------------------	-----------

## AGGLUTINATION SLIDE TESTS

### ASO SLIDE

NB13100	100 T	Agglutination
---------	-------	---------------

### CRP SLIDE

NB13120	100 T	Agglutination
---------	-------	---------------

### RF SLIDE

NB13130	100 T	Agglutination
---------	-------	---------------

### INFECTIOUS MONONUCLEOSIS

NB13160	100 T	Agglutination
---------	-------	---------------

### RPR CARBON

NB13142	125 T	Agglutination
---------	-------	---------------

### TPHA

NB13150	100 T	Hemagglutination
---------	-------	------------------

### WAALER ROSE SLIDE

NB13170	100 T	Slide hemagglutination
---------	-------	------------------------

## COAGULATION

### THROMBOPLASTIN DS

NB14102	R1:2X6ml +R2:2x6ml	Prothrombin time reagent
---------	--------------------	--------------------------

### APTT

NB14110	R1: 5x4 ml R2: 5x4 ml	Liquid stable with Calc Chl.
NB14111	R1: 10x4 ml R2: 10x4 ml	Liquid stable with Calc Chl.

### FIBRINOGEN

Nb14121	R1:4X2ml, R2:50ml, CAL1ml, CTRL 1ml	Clauss method (W/O Caolin)
---------	-------------------------------------	----------------------------

## CONTROLS & CALIBRATORS

<b>CALIBRATOR CLINICAL CHEMISTRY</b>	NB20101, NB20103	R1: 1x3 ml, R1: 5x3 ml	Human Assayed Calibrator
<b>PRECISE NORM</b>	NB40201	R1: 5x5 ml	Human Assayed Control
<b>PRECISE PATH</b>	NB40211	R1: 5x5 ml	Human Assayed Control
<b>CONTROL NORM AND PATH HDL/LDL DIRECT</b>	NB40100, NB40101	R1: 3x3 ml, R1: 6x3 ml	
<b>CALIBRATOR CHOLESTEROL HDL/LDL DIRECT</b>	NB20111, NB20112	R1: 5x1 ml, R1: 1x1 ml	
<b>CONTROL CK-MB &amp; CK-NAC</b>	NB40105	R1: 2x2 ml	CK-MB/CK-NAC SL Control Level 1 and Level 2
<b>HOMOCYSTEINE CONTROL (LOW-MEDIUM-HIGH)</b>	NB40220	R1: 3x1,5 ml	
<b>GENERAL PROTEINS CALIBRATOR</b>	NB40230	R1: 1x2 ml	α1-antitrypsin, α1-ac. glycoprotein, C3, C4, Ceruloplasmin, Haptoglobin, IgA, IgG, IgM, Prealbumin, Transferrin, Antithrombin III
<b>GENERAL PROTEINS CONTROL</b>	NB40231	R1: 1x1 ml	
<b>HBA1C CONTROL (HIGH AND LOW)</b>	NB40302	R1: 2x0,5 ml	
<b>HBA1C CONTROL (HIGH AND LOW)</b>	NB40303	R1: 4x0,5 ml	
<b>HBA1C CALIBRATOR</b>	NB20302	R1: 4x0,5 ml	
<b>ASO/CRP/RF LOW CONTROL</b>	NB40330	R1: 3x1 ml	
<b>ASO/PCR/RF HIGH CONTROL</b>	NB40331	R1: 3x1 ml	
<b>LP (A) CONTROL</b>	NB40340	R1: 1x1 ml	
<b>LP (A) CALIBRATOR</b>	NB20400	R1: 1x1 ml	
<b>MICROALBUMIN CONTROL</b>	NB40350	R1: 2x1 ml	
<b>MICROGLOBULIN B2 CONTROL</b>	NB40360	R1: 2x1 ml	
<b>MICROGLOBULIN B2 CALIBRATOR</b>	NB20430	R1: 1x2 ml	
<b>IGE CONTROL</b>	NB40370	R1: 1x1 ml	
<b>IGE CALIBRATOR</b>	NB20440	R1: 1x1 ml	
<b>FERRITIN CONTROL</b>	NB40391	R1: 1x2 ml	
<b>APO A1/APO B CONTROL</b>	NB20320	R1: 1x1 ml	
<b>APO A1/APO B CALIBRATOR</b>	NB20200	R1: 1x1 ml	



## STANDARDS

URIC ACID STANDARD	NB30100	R1: 5 ml
ALBUMIN STANDARD	NB30101	R1: 5 ml
CALCIUM ARS STANDARD	NB30102	R1: 5 ml
CHOLESTEROL TOTAL STANDARD	NB30104	R1: 5 ml
CREATININE STANDARD	NB30105	R1: 5 ml
IRON FERENE STANDARD	NB30107	R1: 5 ml
PHOSPHORUS STANDARD	NB30108	R1: 5 ml
FRUCTOSAMINE STANDARD	NB30109	R1: 2x1 ml
GLUCOSE/UREA STANDARD	NB30112	R1: 5 ml
MAGNESIUM STANDARD	NB30113	R1: 5 ml
TOTAL PROTEIN STANDARD	NB30115	R1: 5 ml
TRIGLYCERIDES STANDARD	NB30117	R1: 5 ml
SODIUM/ POTASSIUM STANDARD	NB30130	R1: 3x1 ml

## COAGULATION CONTROLS & CALIBRATORS

CONTROL PLASMA N	NB15111	R1: 4x1 ml	Level I, PT, aPTT, Fibrinogen
CONTROL PLASMA N	NB15112	R1: 10x1 ml	Level I, PT, aPTT, Fibrinogen
CONTROL PLASMA N	NB15113	R1: 1x1 ml	Level I, PT, aPTT, Fibrinogen
CONTROL PLASMA P	NB15121	R1: 4x1 ml	Level II, PT, aPTT, Fibrinogen
CONTROL PLASMA P	NB15122	R1: 10x1 ml	Level II, PT, aPTT, Fibrinogen
CONTROL PLASMA P	NB15123	R1: 1x1 ml	Level II, PT, aPTT, Fibrinogen
COAGULATION CALIBRATOR	NB15140	R1: 1x1 ml	PT, aPTT, Fibrinogen
COAGULATION CALIBRATOR	NB15141	R1: 4x1 ml	PT, aPTT, Fibrinogen
FIBRINOGEN CALIBRATOR	NB15100	R1: 2x1 ml	



## NeoChem 100

Automatic BENCH TOP biochemistry analyzer  
(200 tests/hour)

- Throughput: Random access, 200 tests/h
- 7-step washing system with hot water
- On-board reagent cooling system
- Fiber optic - optical system

**NeoChem 100** is the new standard among benchtop chemistry analyzers.

With its new compact design and best-in-class operator interface, it enables significant productivity and overall performance enhancements - not found in other chemistry analyzers in this class.

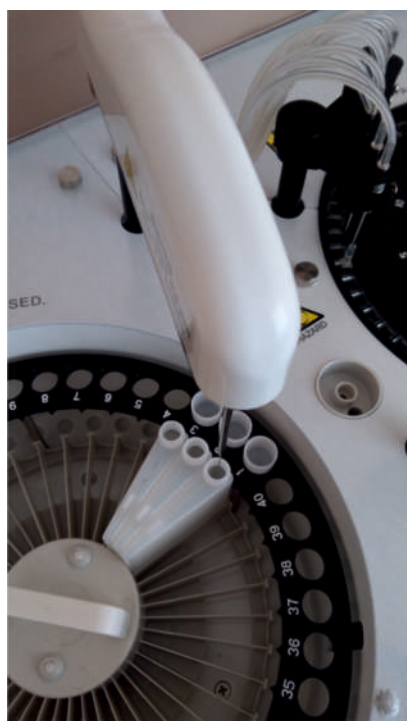
This system is perfect for primary, immediate, or back-up testing requirements. It offers minimal maintenance and effective use of consumables to provide a truly cost-effective operation.

**Cost effective solution  
for small or medium-sized labs  
for primary, STAT or back-up needs.**

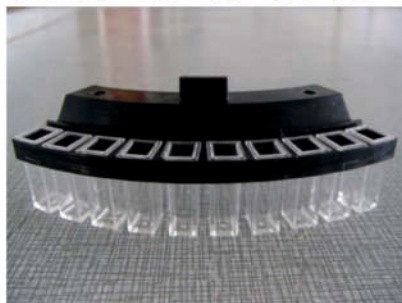
### MAIN ADVANTAGES

- Reagent cooling system
- Automatic cuvettes detection & selection
- Automatic 7-step washing system
- Supported LIS interface
- On-board mixer
- Low Water consumption

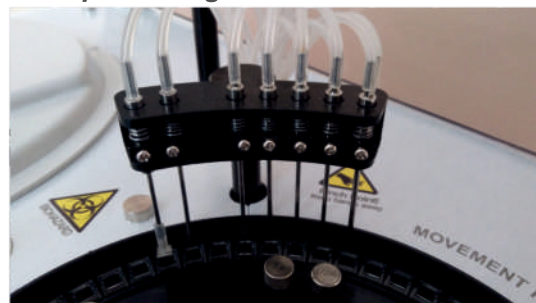
**MINIMAL MAINTENANCE**  
is reducing your operational costs!



*Low cost reusable cuvettes*



*7-step washing station*



## TECHNICAL SPECIFICATIONS

- Test Speed: 200 test / hour
- Assay method: End-point, Fixed-time (two point) Kinetic, Colorimetry, Turbidimetry, Two wavelength, Double reagent, multi-standard etc.
- Reagent Tray: 40 barcoded bottles
- Sample tray: 40 sample positions, samples can be placed randomly, including standard, QC, emergency sample
- Original tube or serum cup can be used
- Reagent tray: 40 reagent positions, 1 diluent position, 20ml reagent bottle, with 24-hour peltier refrigerated reagent tray
- Sample volume: 2-50 $\mu$ l, 0.1 $\mu$ l step
- Reagent volume: R1 150 ~ 300 $\mu$ l, R2 10 ~ 150 $\mu$ l, 1 $\mu$ l step
- Reaction volume: 150 ~ 300 $\mu$ l
- Reaction tray: 60 reusable plastic cuvettes
- Reaction temperature: 37 $\pm$ 0.1 °C,
- Hot water ensures constant temperature in the reaction rotor
- Reaction cuvette: 5mm $\times$ 6mm $\times$ 25mm, optical path 5mm, metacryll cuvette
- Supported LIS
- 9 wavelengths: 340,405,450,510, 546,578,620, 660, 690 + 2 free
- Optical system: Static optical fiber system multi-wavelength spectrophotometer
- Light source: 12V, 20W long-life halogen lamp or LED optional
- Detecting cycle: 18 seconds
- Integrated bar-code reader



**200 tests/hour**

- Data Processing: Editing and storage for more than 300 testing parameters. Patients' information can be stored infinitely.
- Alarms for water & waste, sensors
- Absorbance linearity: 0.0000 ~ 4.0000 Abs
- Wavelength accuracy:  $\pm$ 2nm
- Repeatability: CV  $\leq$  2,0%
- Stability: Within one hour, absorbance change is less than 0.01
- Altitude: below 3000m
- Interface: Instrument / computer: RS-232C, network port, touch screen possible
- QC: Multi QC function, QC diagrams can be stored, displayed and printed; Different QC material can be pre-set up; every test can take 3 different QC material
- Dimensions: 415mm(W) $\times$ 565mm(L) $\times$ 385mm(H)  
Net Weight: 28 kg

# NeoChem 20

**Fully Automated Biochemistry Analyzer, up to 210 tests/h**

**NeoChem 20** is perfectly balanced between economy and quality, without any compromise.

Innovative technology and user friendly system meet all your requirements: simplicity, reliability, accuracy and competition.

## OPTICAL SYSTEM

Static array spectrophotometer system composed of high resolution and halogen lamp, with 10 wavelengths for selecting (340nm, 405nm, 450nm, 492nm, 510nm, 546nm, 578nm, 630nm, 700nm, 800nm) and other two optional positions.

## MAIN FEATURES

- Highly accurate optical system
- 24 hour non-stop cooling system to ensure reagents at 2-8°
- Durable ceramic syringes ensure high accuracy & precision
- Collision protection in both vertical and horizontal directions
- Automatic cuvettes detection & selection
- Automatic creating of new factors
- Selection of the best test point by reaction curve
- Support bi directional LIS and HIS interface



## SAMPLE TRAY

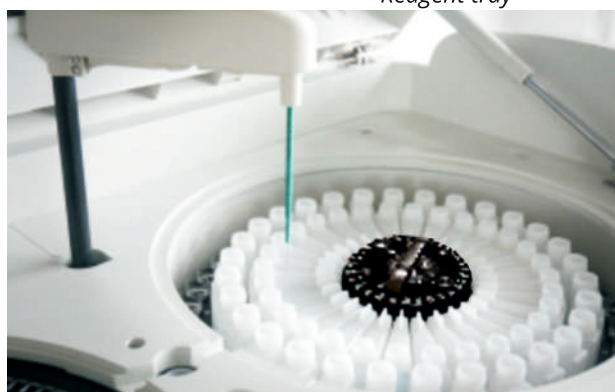
71 sample positions, which consist of routine sample positions, standard positions, quality control positions, probe washing positions and STAT positions. Various samples can be placed randomly. Neonate ultra-micro quantity cup, primary tube and plastic tube are appropriate for those positions. Offers up to 20 virtual sample trays, 1080 samples could be edited simultaneously.

Cuvette Light Path provides 5mm, 6mm and 7mm light paths for selecting.

Reusable cuvettes available (quartz cup is optional)



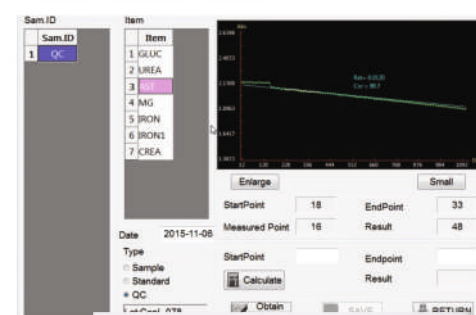
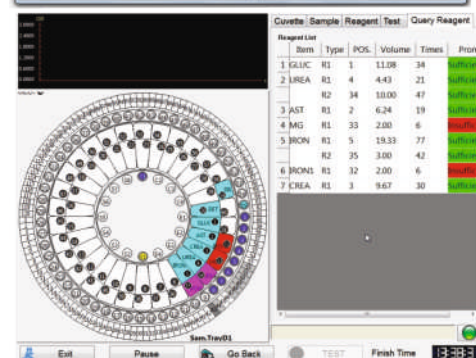
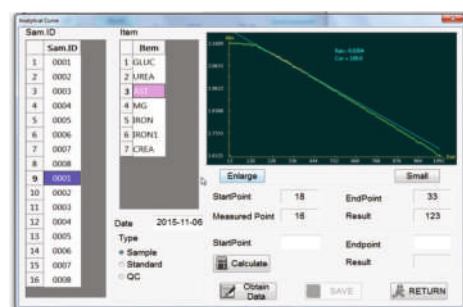
*Reagent tray*



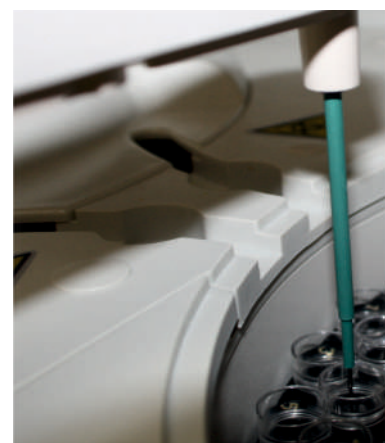


## TECHNICAL SPECIFICATIONS

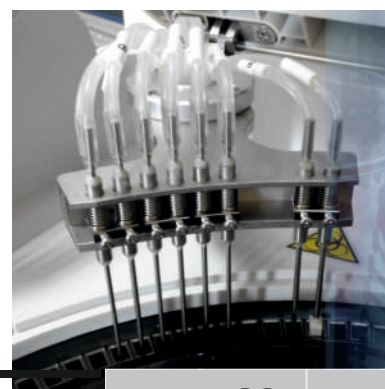
- Principle: Photoelectric colorimetry
- Assay methods: End Point, Kinetic, Fix time etc.  
2 Point, End Point, 2 Point Kinetic, Dual wavelength  
Blank, Immunoturbidimetry sample check, non-linearity  
detection
- Throughput: up to 210 tests/h, Item Storage: Up to 1200
- Sample volume: 2~100ul, variable in 0.1ul increment
- Reagent volume: R1:10~500uL, R2: 10~500uL,  
variable in 0.5uL increment
- Reagent tray: 60 reagent positions ( including 1 detergent  
position and 1 dilution position)
- Sample tray: 71 sample positions, including detergent,  
standard, QC, STAT positions
- Reaction tray: 120 UV metacryll material reaction cuvettes
- Separate mixer probe
- Minimum reaction volume: 180uL
- Maximum reaction time: 22 minutes
- Water Consumption: less than 4L/hour under working status
- Light Source: Halogen lamp 12V/20W
- Absorbance Range: -0.5Abs-6.0Abs, resolution 0.0001Abs
- Resolution: 0.0001Abs
- Wavelength: 10 wavelengths optional (340nm~800nm)
- Wavelength Accuracy:  $\pm 1\text{nm}$
- Barcode
- Reagent Refrigerateing temperature: 2°C-8°C
- Cleaning unit: 8-step auto-washing system with detergent
- Calibration: Automatic selection of best test point by  
reaction curve, no need for second calibration  
Line/non-line; multi standard assay, LogH-Log 4P, Logit-Log5P,  
Exponential function, Spline...
- Reaction Mixture Volume: 110uL~600uL (light path is 5mm),  
130uL~750uL (light path is 6mm), 150uL~900uL  
(light path is 7mm).
- Half Broadband:  $\leq 6\text{nm}$
- Alarms
- Backup reagents position
- Automatic retesting with predilution
- Control: 3 level controls for each item, analysing and printing  
QC analysis diagram
- Temperature control: incubator  $37\pm 0.1^\circ$   
The outside insulated resistance of single fault:  $\leq 0.1\Omega$ .
- Power supply: 230V~, 50/60Hz, 850VA, Fuse: T8AL 250V
- Operating temperature: 10~35°, Rel. humid.: 40%~85%,  
Atmospheric pressure: 86~106kPa
- **Low consumption,**
- **60 reagent positions, 25mL, 50 mL reagent bottle type supported**
- **71 sample positions including routine, stat, control and standard**
- **Up to 20 virtual sample trays can be programmed**



Accurate sampling



Automatic washing system



# NeoChem 30

## Fully Automated Biochemistry Analyzer, up to 310 tests/h

*Solution that keeps your lab progressing forward.*

**Neochem 30** chemistry analyzer builds on a solid reputation of reliability, and provide fast and precise analysis complemented by outstanding low maintenance requirements and operator convenience.

Innovative technology and user friendly system meet all your requirements: simplicity, reliability, accuracy and competition.

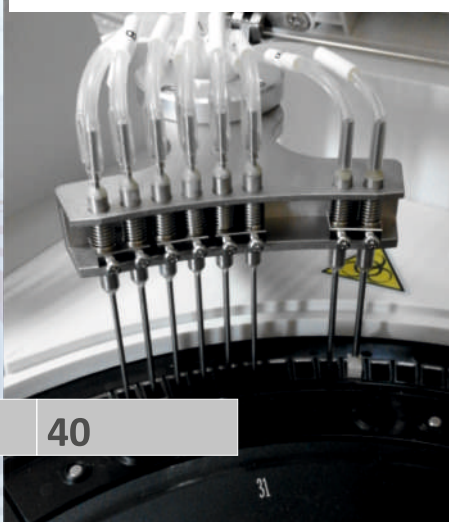
### MAIN FEATURES

- Highly accurate optical system
- 24 hour non-stop cooling system to ensure reagent at 2-8°
- Durable ceramic syringes ensure high accuracy & precision
- Collision protection in both vertical and horizontal directions
- Automatic cuvettes detection & selection
- Automatic creating of new factors
- Selection of the best test point by reaction curve
- Support for bi-direction LIS interface

#### Accurate sampling



#### Automatic washing system



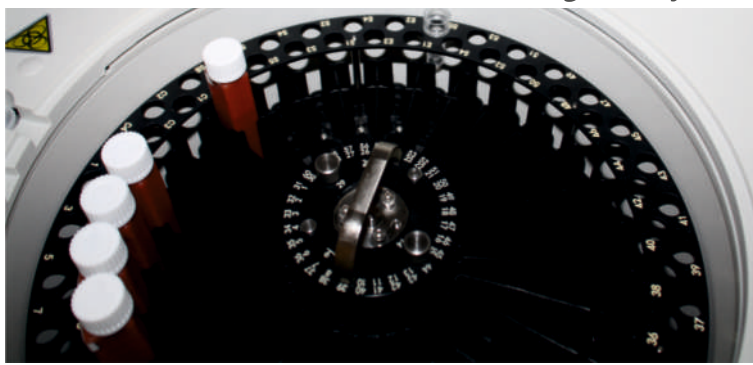
### OPTICAL SYSTEM

Static array spectrophotometer system composed of high resolution halogen lamp, with 10 wavelengths for selecting (340nm, 405nm, 450nm, 492nm, 510nm, 546nm, 578nm, 630nm, 700nm, 800nm) and two free positions for optional wavelengths.

### SAMPLE TRAY

71 sample positions, which consist of routine sample positions, standard positions, quality control positions, probe washing positions and STAT positions. Various samples can be placed randomly. Neonatal ultra-micro quantity cup, primary tube and plastic tube are appropriate for those positions. Offers up to 20 virtual sample trays, 1080 samples could be edited simultaneously.

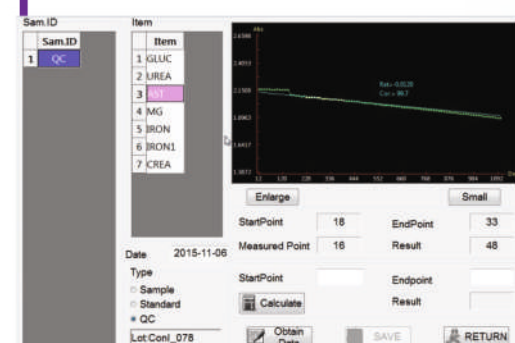
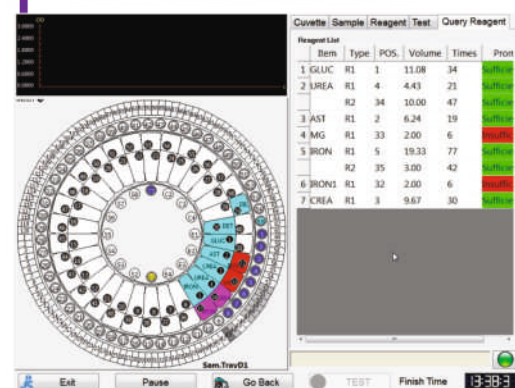
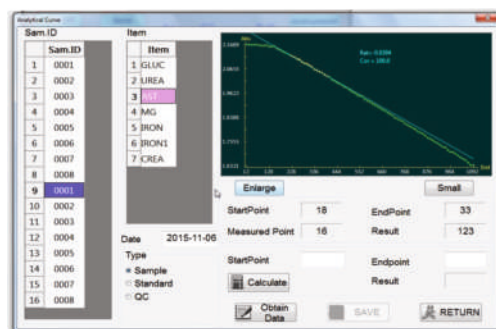
#### Reagent tray





## TECHNICAL SPECIFICATIONS

- Principle: Photoelectric colorimetry
- Assay methods: End point, rate assay (kinetic method), Fixed time, 2-point end point, 1-point end point, (2-point kinetic method) dual-wavelength, blank method, immune turbidimetry sample inspection (serum index, as jaundice, hemolysis) non-linearity detection
- Throughput: up to 310 tests/hour
- Item Storage: Up to 1200
- Sample volume: 2~100ul, variable in 0.1ul
- Reagent volume: 5~500uL, variable in 0.5ul
- Reagent tray: 60 reagent positions, two size bottles
- Sample tray: 71 sample positions, including detergent, standard, QC, STAT positions
- Reaction tray: 120 UV metacryll cuvettes (quartz cup)
- Minimum reaction volume: 180uL
- Maximum reaction time: 18.3 minutes
- Water Consumption:  $\leq 6\text{L/hour}$  under working status
- Light Source: Halogen lamp 12V/20W
- Absorbance Range: -0.5Abs-6.0Abs, resolution 0.0001Abs
- Reagent Refrigeration: Refrigerator temperature is 2-8°C
- Wavelength: 10 wavelengths optional (340nm~800nm)
- Barcode
- Clean unit: 8-step auto-washing system with detergent and 37°C water. Peltier element controller.
- Calibration: select best test point by reaction curve, no need for second calibration. 8 calibrations for each item.
- Control: 3 level controls for each item, Westgard, Levey-Jennings, Cumulative sum check, Twin plot Real-time QC, within-day QC, between-days QC
- Temperature control: incubator  $37\pm 0.1^\circ\text{C}$
- Reaction Mixture Volume: 110uL~600uL (light path is 5mm), 130uL~750uL (light path is 6mm), 150uL~900uL (light path is 7mm)
- Wavelength Accuracy:  $\pm 1\text{nm}$ , Half Broadband:  $\leq 6\text{nm}$
- The outside insulated resistance of single fault:  $\leq 0.1\Omega$
- Alarms
- Backup reagents position
- Predilution re-testing
- Operating temperature:  $10\sim 35^\circ$ , Rel. humid.: 40%~85%
- Atmospher pressure: 86~106kPa
- Power supply: 230(1 $\pm$ 10%)V, 50/60Hz, 1000VA,
- **Low consumption**
- **60 reagent positions, 25mL, 50 mL reagent bottle type supported**
- **71 sample positions including routine, stat, control and standard**
- **Up to 20 virtual sample trays can be programmed**



### Reusable cuvettes

Cuvette Light Path

5 mm, 6mm and 7mm light paths are provided for selecting.



# NeoChem 40

**Fully Automated Biochemistry Analyzer, 420 tests/hour**

*Experience the Quality and Improve your results.*

- **NeoChem 40** fully-automated chemistry analyzer improves operation efficiency and result integrity with a highly-developed clinical chemistry system for routine and special chemistry.
- Innovative technology and user friendly system meet all your requirements: simplicity, reliability, accuracy and competitiveness.
- **NeoChem 40** analyzer is an ideal solution for high-end hospitals, laboratories and clinics that look for more advanced technology, reliable, safe, accurate and easy to use instrumentation.

## SAMPLE TRAY

80 sample positions consisting of routine sample positions, standard positions, quality control positions, probe washing positions and STAT positions.

Holding various samples on board, sample cups, neonatal ultramicro quantity cup, primary tube and plastic tube is appropriate for those positions.

Option for programming up to 20 virtual sample trays, allows 1320 samples to be edited simultaneously.

Cuvette: 90 UV metacryll cuvettes (quartz cup opt.)

Cuvette light path: 7mm light path

## MAIN FEATURES

- High-accuracy optical system
- Durable ceramic syringes ensure high accuracy and precision
- Collision protection in both vertical and horizontal directions
- Automatic cuvettes' detection & selection
- Automatic start from the last cuvette used
- Selection of the best test point by reaction curve
- Automatic creating of new factors
- Support for bi-directional LIS and HIS interface
- Internal bar-code reader (optional)

## CHEMISTRY REAGENTS

- High-quality, ready-to-use liquid reagents tailored for use on this instrument provide the complete biochemistry solution and ensure maximum comfort of use.



## OPTICAL SYSTEM

Concave holographic aberration-reduced grating, array photodiode, rear spectrophotometry optical system with 12 wavelengths. LED source lamp.

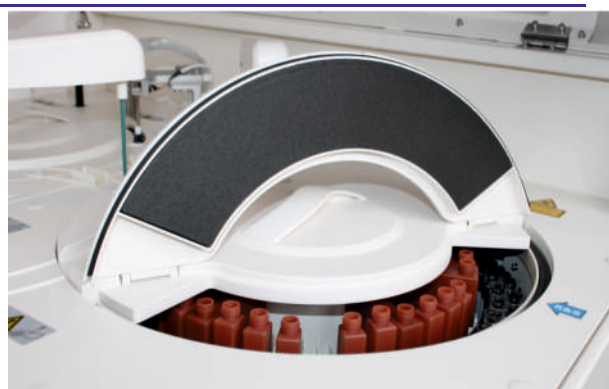
## Reagent refrigeration

24-hour non-stop refrigeration function, the refrigerated temperature is 2-8°C.

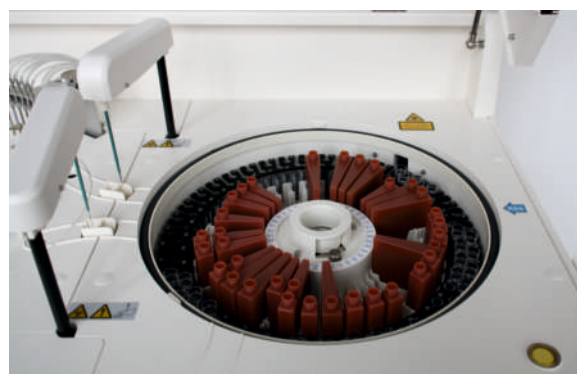


## TECHNICAL SPECIFICATIONS

- Principle: Photoelectric colorimetry
- Assay methods: End Point, 2-Point End Point, Kinetic (Rate Assay), 2-Point Kinetic
- Throughput: 420 tests/hour, 600 tests/hour with ISE - optional Item storage: up to 1200
- Sample volume: range 2-35 $\mu$ l in 0,05 $\mu$ l step
- Reagent volume: 10-300 $\mu$ l in 0,05 $\mu$ l step/dedicated 2 reagent arms (R1 & R2)
- Reagent tray: 80 positions (20mL, 50mL and 70mL bottles) on removable tray.
- Sample tray: 80 sample positions, including routine sample positions, standard positions, QC positions, detergent positions and STAT positions.
- Reaction volume: up to 900 $\mu$ l (light path is 7mm)
- Maximum reaction time: 9,3 minutes
- Water consumption: less than 12L/hour under working status  
Light source: Halogen lamp 12V/20W
- Absorbance range: -0.5Abs-6.0Abs; Resolution: 0,0001Abs  
Half broadband:  $\leq 6$ nm
- Spot photometry with digital high speed transmission system.
- Static state grating optical system.
- Wavelengths: 12 wavelengths (340nm, 405nm, 450nm, 480nm, 505nm, 546nm, 570nm, 605nm, 660nm, 700nm, 750nm, 800nm) using grating; Wavelength accuracy:  $\pm 1$ nm
- Cleaning unit: 8-step auto-washing system
- Control rules: Westgard multi-rule, Cumulative sum check, Twin plot
- Calibration: selecting best test point by reaction curve, no need for second calibration
- Temperature control: incubator  $37 \pm 0.1^{\circ}\text{C}$   
Power supply: AC220 ( $1 \pm 10\%$ )V, 50/60Hz
- Operating temperature: 10-35 $^{\circ}\text{C}$
- Relative humidity: 40%~85%, Atmospheric pressure: 86~106kPa  
Power: 1100 VA



*Easy and safe access to reagent*



*Reagent tray*

## CALIBRATION METHOD

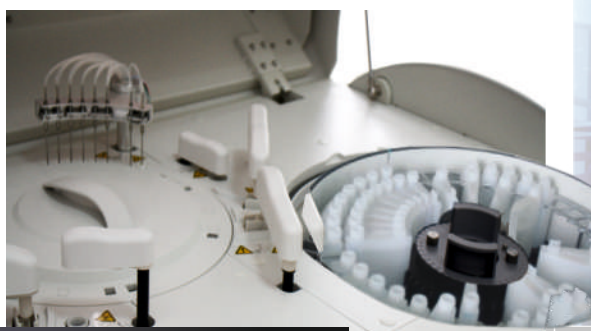
Single point, multi point and non-linearity calibration.

Multiple calibration formula including Logit-Log4P, Logit-Log5P and exponential function

12 calibrations in different concentration can be used for each item.



*Washing station*



# NeoChem

## Semi-automated Biochemistry Analyzer

- Convenient maintenance design
- Easy TOUCH SCREEN operation
- 8 inner incubation positions
- Bar-code reader supported



Semi-automated Chemistry Analyzer based on the principle of photoelectric colorimetry, with micro-computer, touch screen and fiber optics.

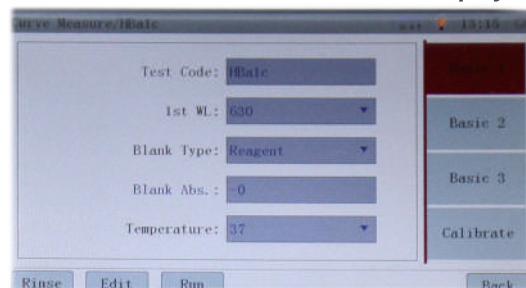
It is intended for use in conjunction with certain reagents to perform quantitative in vitro chemistry and immunology tests on a variety of clinical samples, such as serum, urine, cerebrospinal fluid and plasma.

### TECHNICAL SPECIFICATIONS

- Test method: Photoelectric colorimetry principle
- Assay modes: Endpoint, Kinetic, 2-point Kinetic, and Dual WL., ABS .
- Optical system: Spectrophotometry optical system with high-resolution filter and halogen light. There are 8 wavelengths to select (340nm, 405nm, 492nm, 510nm, 546nm, 578nm, 630nm, 700nm), and the wavelength range is 300nm~800nm , fiber optics ensure reading on all wavelengths
- Test items: ≥300.
- Light source: 6V/10W long-life halogen lamp with auto-sleep function.
- Screen: 7-inch color touch screen, resolution 800×480 with adjustable screen brightness
- Testing time: 0~999 seconds. It's programmable
- Delayed time: 0~999 seconds. It's programmable
- Colorimetric system: 32μL flowing quartz cuvette or stainless steel quartz cuvette
- Optical diameter: 10mm
- Aspirating volume: 100μL~9999μL, 500μL is recommended.
- Micro flowcell
- Precise peristaltic pump
- Single start key
- Aspirating accuracy: ±3μL
- Temperature control: 37°C and room temperature
- QC function: QC and statistics functions QC curve displayed
- Monitoring of the reaction process: Monitoring of the abnormal reaction, such as substrate exhaust, and display of the reaction curve in real time. Instrument can also be connected to the computer by specific software for advanced data management.
- Result storage: 300 general items' parameters, 20 curve items' parameters and 30000 test results
- Printing output: Instrument can be connected to an external printer

- External interface: 1 SD interface, 3 USB interfaces, 1 PS/2 interface, 1 parallel interface and 1 RJ-45 interface
- Half broadband:  $\leq 10\text{nm}$
- Network: Support LIS/HIS connection
- Integrated printer
- Available veterinary application
- Power: AC200~240V; 50/60Hz
- The outside insulated resistance of single fault:  $\leq 0.1\Omega$
- Repeatability:  $\text{CV} \leq 1.0\%$
- Cross contamination:  $\leq 1.0\%$
- Accuracy and fluctuation of cuvette's temperature: Cuvette's temperature accuracy bias does not exceed  $\pm 0.2^\circ\text{C}$ ; and temperature fluctuation does not exceed  $\pm 0.1^\circ\text{C}$ .
- Drift rate of absorbance:  $\leq 0.005\text{Abs}/20\text{min}$
- Photometric range:  $-0.3\text{Abs} \sim 4.0\text{Abs}$
- Carry-over:  $\leq 1.0\%$  (Fixed cuvette is inapplicable)
- Environment temperature:  $10^\circ\text{C} \sim 32^\circ\text{C}$
- Relative humidity:  $40\% \sim 85\%$
- Atmospheric pressure:  $86\text{kPa} \sim 106\text{kPa}$
- Fuse: T2AL 250V
- Printer: Built-in thermal printer
- Dimensions:  $36(\text{L}) \times 34(\text{W}) \times 16(\text{H}) \text{ cm}$
- Net weight: 5,9kg, Gross weight: 11,2kg

**Display**



**8 Incubation positions**





## NeoCube

### New automated biochemistry analyzer

**Neo-Cube** is small fully automated chemistry analyzer which can detect **up to 26 items**, up to **14 individual reagent plate test items** (excluding calculation items), and the reagent plate is disposable.

### Intelligent real-time quality control system(IRQC)

The built-in QC system checks the instrument, reagent plate and sample validity before each test and monitors it in real time throughout the test to maximize the accuracy of the test.



**NEW !**

### TECHNICAL SPECIFICATIONS

- Testing principle: Absorption spectroscopy, transmission turbidimetry
- Testing method: End point, rate, fixed time
- Sample type: Lithium Heparin Anticoagulant whole blood, serum and plasma
- Sample volume: 90-120 uL
- Testing time: 12 minutes/sample
- Optyc system: 8 wave lenght sinchronous detection: 340, 405, 450, 505, 546, 600, 630,850nm
- QC & Calibrate: Automatic and real-time
- Display: 6.5 inch multi touch screen, Android system, multi-language support
- Storage: >500,000 PCS data
- Printer: Built-in thermal printer
- Work Environment: Temp 10-30°C, Hum <85%
- Weight: 4,2kg

### Simple, fast and accurate

All steps are automated  
Blood tests in just three easy steps.

No maintenance, easy to use in mobile areas and in the field.  
No wearing parts such as pump valves.  
Portable and modern design.





## Neo-ISE

### ION SELECTIVE ANALYZER

**High-speed and accurate**

***Ion Selective Electrode Analyzer by NeoMedica***

- **Neo-ISE Type A** analyzer is the basic model of ISE analyzer with Na, K, Cl electrodes.

**Neo-ISE Type B** analyzer is an upgraded model with various combination of electrodes:  
K, Na, Cl, iCa, Tca, pH, Li, Mg, TCO<sub>2</sub>, AG

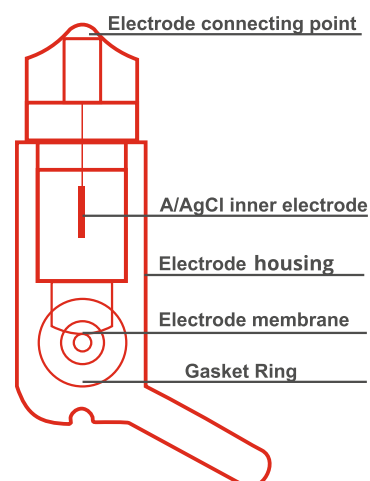
- The instrument is intended for use in hospitals to measure K, Na, Cl, Li, Mg, Ca, nCa, Tca and TCO<sub>2</sub> as well as pH values, AG in samples of whole blood, serum, plasma, urine solution (diluted)
- The device is equipped with an accurate in-built reagent pack which can be disposed easily. Direct ISE technology offers easy handling, economical testing of a variety of ISE parameters and requires only minimal maintenance.
- The incorporated printer, coupled with LCD touch screen enhances the ergonomics in operations.
- Reagents are supplied in packs which are plugged into the side of the unit with no user contact to waste material. The unit contains a possibility to track and monitor the quantity of reagent remaining.

**Neo-ISE analyzers offer 12 different configurations.**  
**Neo-ISE Type A is a standard configuration with K, Na, Cl.**  
**Neo-ISE Type B offers 10 possible configurations.**

### AVAILABLE MODELS

INSTRUMENT	PARAMETERS
Neo ISE Type A	K, Na, Cl
Neo ISE Type B	
combination 2	K, Na, Cl, TCO <sub>2</sub>
combination 3	K, Na, Cl, iCa, nCa, TCa, PH
combination 4	K, Na, Cl, iCa, nCa, TCa, PH, TCO <sub>2</sub> , AG
combination 5	K, Na, Cl, Li
combination 6	K, Na, Cl, iCa, nCa, TCa, PH, Li
combination 7	K, Na, Cl, iCa, nCa, TCa, PH, Li, TCO <sub>2</sub> , AG
combination 8	K, Na, Cl, Mg
combination 9	K, Na, Cl, iCa, nCa, TCa, PH, Mg
combination 10	K, Na, Cl, iCa, nCa, TCa, PH, Mg, TCO <sub>2</sub> , AG
combination 11	K, Na, Cl, iCa, nCa, TCa, PH, Li, Mg, TCO <sub>2</sub> , AG

- **Fast Analysis**
- **Color TOUCH SCREEN**
- **Long-lasting electrodes**
- **Automatic selection and calibration**



## TECHNICAL SPECIFICATIONS

### PRINCIPLES

Ion Selective Electrode direct measurement

Touch screen. Color LCD. Long life USA produced electrodes. TCO<sub>2</sub> sensor. Monitoring of remaining reagents. Memory of 50.000 test results

USB, RS 232 port. Auto sampler as Option

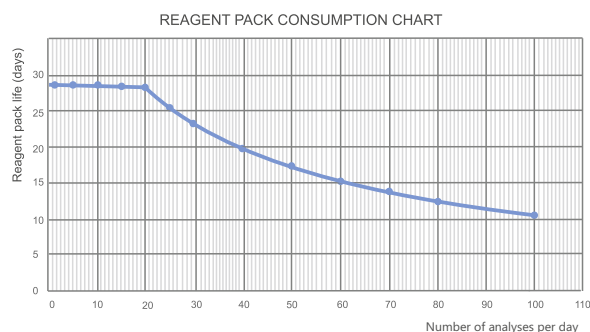
Barcode Reader as option. Automatic calibration

Two-point correction to adjust slope and intercept  
multiformat printout. QC graph printout

Special sleep mode reduces reagent consumption

Dimensions: 350x210x385mm

Net Weight: 6kg, Gross Weight: 8kg



### AUTO SAMPLER

Neo ISE analyzer offers manual mode and fully automatic mode with auto sampler.

Auto sampler is optional and can be mounted easily by user, together with a bar code scanner.

Sample analysis by auto sampler can be tested in manual or automatic mode.

Emergency analyses are easily available on 5 places clearly marked on the auto sampler.

Any position on the rotor can be marked by the user as a sample.

### ELECTRODES

Electrodes can be activated by the user.

Shelf life of electrodes is extended to maximum with an activation by user.

With proper maintenance the electrodes' lifetime is 1 to 2 years.

## ADVANTAGES

- Internal printer is fast and offers selectable reports Rs232 data connector.
- Normal value range is programmable
- Test Speed can be selected by user
- Calibration:
  - ISE calibration, CO<sub>2</sub> calibration, Two-point calibration Slope
  - User could change the calibration frequency for each sample or every 10 or 20 sample.
  - Two-point calibration frequency can be adjustable.
  - User can define operative parameters, simply by clicking on a button.

## CLINICAL ELECTRODE RANGE

Items	Serum	Urine
K <sup>+</sup>	3.5-5.2 mmol/L	50-100 mmol/L
Na <sup>+</sup>	136-145 mmol/L	130-217 mmol/L
Cl <sup>-</sup>	96-106 mmol/L	170-250 mmol/L
Ca <sup>2+</sup>	1.09-1.35 mmol/L	
TCO <sub>2</sub>	20-33 mmol/L (Adult)	

Principle	Direct ISE measurement
Throughput	144 sample/h ( 25 sec/sample )
Sample type	w. blood, serum, plasma, dil. urin
Sample volume	60 µl
Calibration	1 or 2 point calibration
Display	7" TFT colour LCD Touch screen
Printer	Internal thermal printer
Communication	RS 232 serial
Data storage	50000 results
Reagents	Closed package with waste bag
Reagents package	430ml Cal A + 70ml Cal B + waste bag

## REAGENTS

CODE	PRODUCT	PACK
I11200	Reagent Pack-1	430 +70 ml
I11305	Ref.Internal Solution	10 ml
I11309	Electrode Internal Solution	3 ml
I11306	Activating Solution	110 ml
I11308	QC Solution	3x35ml
I11308-3level	QC Solution	3x35ml
I11203	Cleaner ISE-1	110 ml
I11307	Electrode Wash Solution-1	25mg+ 1ml
I11308-3level	QC Solution	3x35ml

## NRDD-66

**Automated Coagulation Analyzer**  
(up to 120 tests/hour)

- *Accurate, convenient*
- *4 channel fully automated analyzer*
- *Continuous loading*
- *STAT sample*
- *Low dead volume reagents*



Automated coagulation analyzer **NRDD-66** is used for fast detection of blood coagulation.

Nemedica's NRDD-66 is suitable for hospital clinic testing, laboratories and scientific research institutes.

The instrument tests the coagulation function with the optical method.

Testing items include prothrombin time, PT; activated partial thromboplastin time, APTT; thrombin time, TT; fibrinogen, FIB.

D-Dimer, FDP function, Chemogenics peptide substrate method for AT III, FM, APC-R, PC, PS, WF, and other blood coagulation factors.

### NEOMEDICA COAGULATION REAGENTS

THROMBOPLASTIN DS - Lyophilized + buffer

APTT - Liquid stable

CALCIUM CHLORIDE - Ready to use for APTT

FIBRINOGEN - Lyophilized, KAOLIN

### NEOMEDICA CONTROLS & CALIBRATORS

FIBRINOGEN CALIBRATOR

CONTROL PLASMA N - Level I, PT, aPTT, Fibrinogen

CONTROL PLASMA P - Level II, PT, aPTT, Fibrinogen

COAGULATION CALIBRATOR - PT, aPTT, Fibrinogen

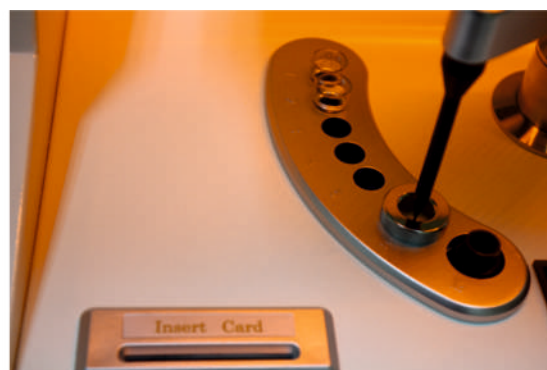


- Cleaning position 1
- Pre-heating position 4
- Testing position 4
- Sample position 5
- External bar-code (optional)



## TECHNICAL SPECIFICATIONS

- Test method: Photoelectric colorimetry - nephelometry  
Testing parameters:
- prothrombin time, PT; activated partial thromboplastin time, APTT; thrombin time, TT; fibrinogen, FIB.  
D-Dimer, FDP function, Chemogenics peptide substrate method for AT III, FM, APC-R, PC, PS, WF, and other blood coagulation factors.
- Sample position: 5 fixed sample positions which can be used repeatedly
- Sample tube: standard anticoagulant blood collection tube or sample cup
- Reagent holding: 6 positions for reagent
- Maximum testing speed: up to 120 tests/hour
- Batch test function and emergency sample are available
- Abnormal test results alarm and automatic retest function
- Cleaning solution shortage alarm and waste liquid overflow alarm function
- Automatic and manual calibration function
- Display of a dynamic test coagulation curve
- Fibrinogen can be recalculated from PT
- Automatic predilution for calibrator - multi point calibration curve
- Reagents are in temperature controlled position with tilt to ensure minimum death volume



- Continuous sampling, testing and cleaning
- Multi wavelengths ensure multi methods: Coagulation method, Immunoturbidimetry method, Chromogenic peptide substrate method, FIB derivate from PT method
- Dual mode - automatic or manual sampling
- Reagent card for continuous testing

## NeoChem 60

SEMI-AUTOMATED COAGULATION ANALYZER

## TECHNICAL SPECIFICATIONS

- Test principle: dual-magnetic sensor method.
- Test item: PT, APTT, FIB, TT, Blood Coagulation factor II, V, VII, VIII, IX, X, XI, XII, Pro C, Pro S, HEP, LMWH.
- Data capacity: the analyzer can memorize 1000 samples data
- Test channel:
- NeoChem 60 REF No N117708 has 2 test channels
- NeoChem 60 REF No N117707 has 4 test channels.
- Channel deviation is less than 10%.
- Incubator: 16 sample positions, 4 reagent positions
- Display: LCD, English menu, operation and test information
- Printer: print comprehensive report; internal thermal printer would print test results automatically if it is ON; likewise, connect with an external printer is also available



- Environment specification:  
Operation: 15°C~35°C, RH ≤ 80%, 75kPa~106kPa  
Storage: -20°C~55°C, RH ≤ 85%, 75kPa~106kPa
- Power specification:  
AC100V~240V, 50Hz / 60Hz, 45W
- Dimension: 380mm×340mm×130mm  
Net Weight: 5.0Kg

[more information on ivd@neomedica.rs](mailto:more information on ivd@neomedica.rs)



# URINANALYSIS

- Urinalysis has been an important diagnostic tool for more than hundred years.
- It can reveal diseases that have gone unnoticed, because they do not produce striking signs or symptoms, for instance diabetes mellitus, various forms of glomerulonephritis, and chronic urinary tract infections.
- NeoMedica manufactures high-end NUA series Urine analyzers, combining the chemistry method of urine strip testing and the traditional microscopic method through a digital high-resolution imaging system for enhanced, fast, reliable results and lab personal safety.
- Fully automated measurement process with NUA100 and NUA1500 has been based on traditional microscopic method and reliable chemical analysis.



# NUA-1000

## NUA Series

### FULLY AUTOMATED URINE SEDIMENT ANALYZERS

Fully automated measurement process based on traditional microscopic method

NUA 1000 is an automated urine sediment analyzer which provides whole field of view microscopic images of urine sediment and detects sediment particles.

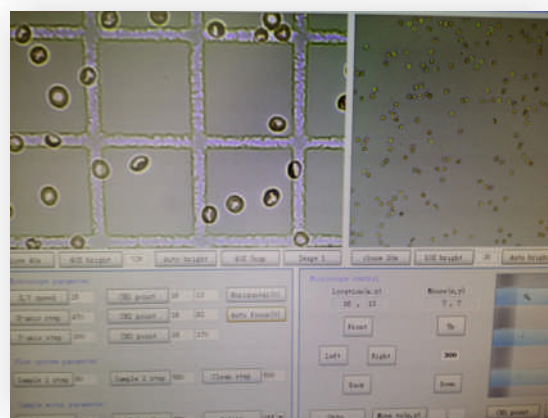
This analyzer is using a high definition imaging system, combined with sophisticated optics, achromatic high quality lens and optical fiber lightening.

Particles are automatically classified, eliminating the need for manual microscopic examination.

Dedicated software simplifies on-screen result verification, including clear view of each recognized particle, size information, and full image database of microscope viewfield.

Bridging NUA-1000 with NUA-1500 (fully automated chemistry urine analyzer), makes NeoMedica NUA urinalysis station a powerful tool for high-volume automation.

4 test modes (Intelligent, Fast, Normal and Fine)



Qualitative and quantitative analysis of the urine sediment

URINE SEDIMENT ANALYZER

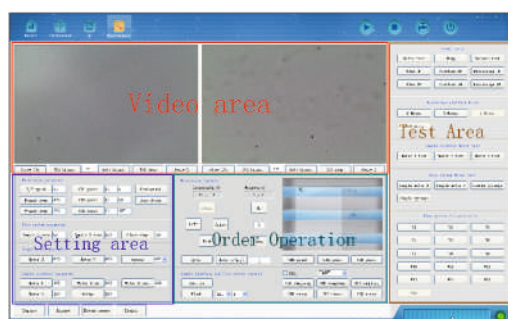
## Constant assistance

Urine Sediment Atlas shows as pop up software.



## Flexible

- Picture can be printed and added into the report.
- User can classify unrecognized particles at all times.
- Analyzer will automatically calculate and refresh every item result.



- Special grid for automatic microscope calibration
- Quality Control: L-J QC diagram, mean, SD and CV etc.
- User password control
- Auto sampling: Auto match conditions: "Tube", "ID" and "Barcode"
- Bridge with NUA1500
- Samples: emergency sample, Bar-coded tube, Batch mode, Open tube



## TECHNICAL SPECIFICATIONS

- Parameters:
  - Red Blood Cells (RBC); White Blood Cells (WBC); Hyaline Casts (HYA); Squamous Epithelial Cells (EPI); Non-Squamous Epithelial Cells (NSEC); bacteria (BAC); Yeast (YEA); Crystals (CRY); Sperm (SPRM). Pathological Casts (PAT); Mucus (MUC); etc...
- Technology: Automated microscopy and image processing
- Counting cell:
  - triple channel (3 flow cells)
  - 0,1 mm thickness of inner chamber
- Throughput: up to 100 tests/hour
- Batch size: 50 Test tubes
- Min. sample volume: 2,5 ml non-centrifuged urine
- Sample: Native urine samples or sediment urine samples
- Interface: USB, RS232 serial port, LPT, LAN
- Data memory stores more than 50.000 results with images
- Easy data handling: Data backup, Data recovery and data export to excel file
- Features: Stat function, Advanced identification, Bar code reader (built in), Modular system
- Conetion with NUA-1500, Auto loader, LIS data transfer, High resolution imaging, 12 categories of formed elements
- No chemical dye required, Level sensors,
- Dual lens and cameras
- Ports
  - DVI-D video port
  - internet port 1, internet port 2
  - USB 1, USB2, USB3, USB4, COM port
- Supply: AC 100V ~240V
- Frequency: 50/60Hz
- Fuse: T3.15AL250V
- Power: ≤ 150~220 VA
- Dimensions and Weight
  - Dimension: L650× W640× H560mm
  - Weight: 60Kg

## REAGENTS

2 main reagents - detergents

## Advanced optics

**Faster sampling:** Triple Counting Channel - 3 flowcells

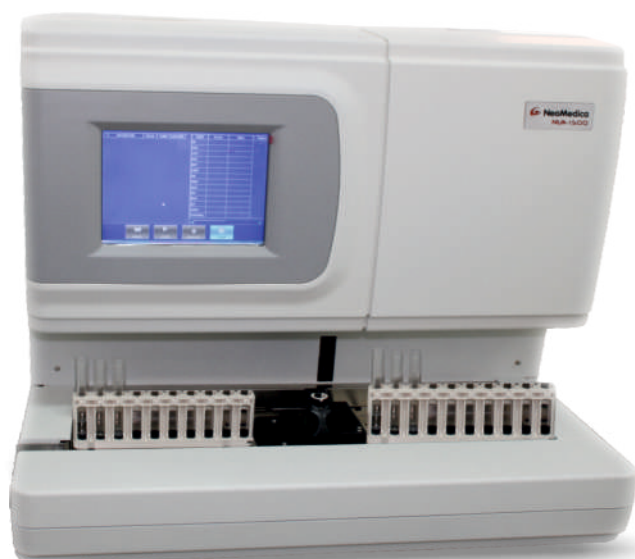
**Quality and speed:** Dual lens and dual cameras

# NUA-1500

NUA Series

FULLY AUTOMATED URINE BIOCHEMISTRY ANALYZERS

NUA 1500 is a high throughput, automated urine biochemistry analyzer



**300 samples/hour**

**Automatic Sample Dispension**

**Automatic Sample Transfer**

**Automatic Strip Feed**

**Bar Code Reader**

**STAT Analysis**

- Maintenance-free sample handling system dispenses samples precisely on each pad on urine strip, eliminating cross contamination of individual chemical pads.

### Multi Strip Loader

Automatic sampling (autoloader)  
Reading of tube rack number

### 3 ways to verify quality

QC", "CHECK STRIP", "CALIBRATION"

### Advanced Analysis Component

CIS technology  
for more accurate sample analysis

Data Export. LIS transfer

### SAMPLE COLOR IDENTIFICATION

SG, Color and Turbidity measurement by  
Refractometer module.

### LIQUID LEVEL DETECTION TECHNOLOGY

The instrument with the **mixing function** ensures  
mixing of samples which have been stored for longer  
period of time, and guarantees **accuracy** of test results.

### MULTI PARAMETERS

Bilirubin, Urobilinogen, Ketones, Ascorbic acid,  
Glucose, Protein, Blood, pH, Nitrite, Leukocytes  
Microalbumine, Specific Gravity, Creatinine,  
MA/CR, Calcium, Color, Turbidity

### REAGENTS

CODE	PRODUCTS	PACK	ANALYSIS ITEMS
N21830	Neocheck 1A	100strips/pack	Nitrite/pH/glucose/protein/Occultblood/ketone/ bilirubin/Urobilinogen/SG/leukocytes/ ascorbic acid
N21831	Neocheck 12	100strips/pack	Nitrite/pH/glucose/protein/Occultblood/ketone/ bilirubin/Urobilinogen/SG/leukoc/ asc. acid/Microalb.
N441302	Detergent US	500 mL	



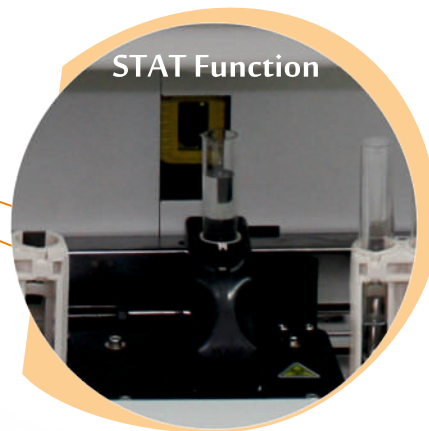
## TECHNICAL SPECIFICATIONS

- Evaluated parameters:  
Bilirubin, Urobilinogen, Ketones, Ascorbic acid, Glucose, Protein, Blood, pH, Nitrite, Leukocytes, Microalbumine, Specific Gravity, Creatinine, MA/CR, Calcium, Color, Turbidity  
Via urine strips: Neocheck 1A, 12.
- Technology:  
reflectance photometer  
(wavelengths: 505, 530, 620, 660 nm)
- Throughput:  
300 samples/hour
- Batch size:  
110 Test tubes
- Memory capacity:  
up to 300.000 results
- Display: 8" TFT Colour Touch Screen
- Printer:  
Built-in thermal printer  
External printer-optional
- Interface:  
USB, RS232 serial port, LPT, LAN, PS2
- Operating system:  
Linux
- 2 ml Min. sample volume:  
Stat function

Urine test strips with **14 parameters AVAILABLE!**

- Strip capacity:  
>200 strips

### STAT Function



## FEATURES

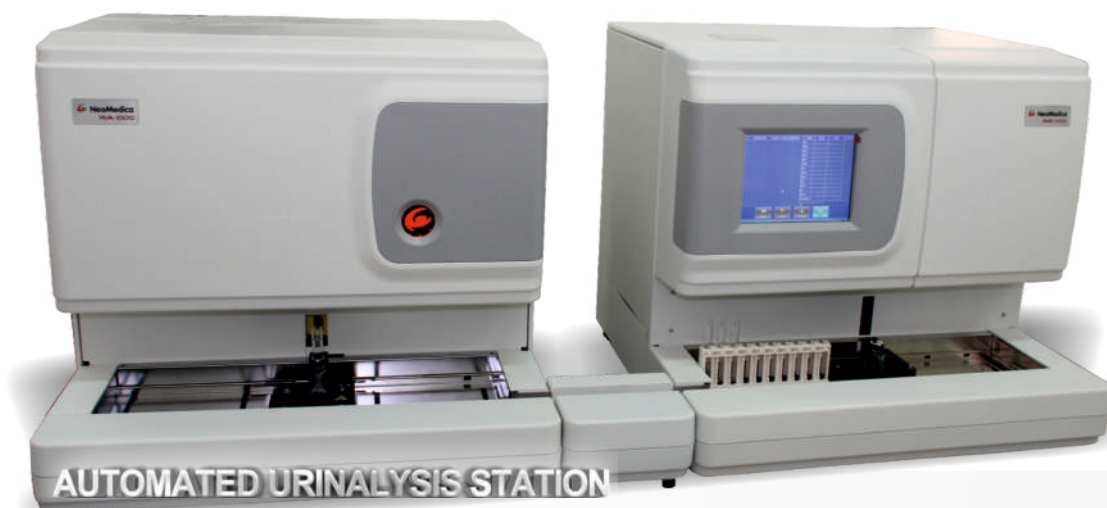
- Modular system
- Connect with NUA-1000 to form Fully Automated Urine Station
- Bar code reader (built in)
- LIS data transfer
- Level detection
- Advanced QC

**Reliable ceramic pump**



# NUA-1000 & NUA-1500

FULLY AUTOMATED CHEMISTRY AND SEDIMENT ANALYSIS SYSTEM



## BRIDGED NUA = EFFICIENCY

NUA-1000 bridged with NUA-1500 provides standardisation and productivity with automatic validation

Easy to correlate results with the Gold standard method (manual microscopy)

**NUA-1000 bridged with NUA-1500** provides optimized workflow and maximizes work efficiency.

Smart bridging option (conditional bridging) for optimal Urine Station utilization, increases throughput and reduces operation cost, by running sediment analysis on NUA-1000 only for those samples that showed out of range chemistry parameters.

Low operation cost - only 2 detergents for the entire system.

Sample mixing by air on both units.

## ■ ENHANCED TECHNOLOGY SYSTEM FOR URINE ANALYSIS

Bridging NUA-1500 with NUA-1000 (fully automated sediment urine analyzer), turns NeoMedica NUA urinalysis station into powerful automated tool for high-volume sample processing.

**Using advanced technology, every lab can decrease the operating budget together with increasing staff efficiency.**

High walk away capabilities: 110 samples in 11 racks

Easy to trace patient data and QC results



## NUA-150

### FULLY AUTOMATED URINE SEDIMENT ANALYZER

Fully automated measurement process based on traditional microscopic method

NUA-150 urine sediment analyzer recognizes the visible components of urine through the imaging and saves the test results to provide the necessary reference to clinical diagnosis.

- Auto-particle recognition :  
RBC, WBC, SQEP (squamous epithelial cells), NSE (non-squamous epithelial cells), HYA (cast), UNCC, CAOx (calcium oxalate crystal), BACT (bacteria), yeast, and etc.
- RBC phase detection
- Receive NEOMEDICA series urine dry chemistry analyzer's test data

### TECHNICAL SPECIFICATIONS

- Technology: Automatic microscopy and image processing
- Throughput: more than 50 samples / hour
- Sample: native urine samples or urine sediment samples
- Sample volume: minimum volume: 1.2 ml
- Testing principle: automatic sampling, diluting, blending, screening, image acquiring, particle counting, data saving, flow cell and probe washing, printing
- Counting cell: double channel
- Accuracy: over 95%
- Memory capacity: more than 50,000 results  
Printer: thermal printer (other: laser printer or ink printer )
- Interfaces: RS-232 SERIAL PORT, USB, TCP / IP Ethernet
- Power supply: AC 100V - 240V; Frequency: 50/60Hz  
Fuse: T3.15A L250V; Rated power: 150VA

### State of The Art technology in image recognition

By combining computer science, image processing and pattern recognition, our State of The Art technology in image recognition can automatically recognize and analyze images from digital microscopes.

NUA-150 analyzes the shape and size of RBC and gives distribution histogram of RBC in urine, MCD and RRATE

### Comprehensive Calibration System

Auto calibration function ensures stability of the system.

### High-precision Test System

The use of Olympus flat-field achromatic objective lens and automatic continuous zoom optical lens ensures the perfect quality of microscopic images.

Automatic calibration without using chemical reagents.

The infinite adjustment of the microscope light intensity ensures the clarity of images.  
Japanese Nanotechnology quartz counting chamber with smooth inner wall and uniform a thickness of the inner diameter.

### Powerful Interface

Urine sediment images, results of analysis and dry chemistry results are displayed on the same screen.

This allows immediate comparison in order to improve the accuracy of the obtained results.

### Reliable Quality Control system



**NUA -50**

- Compact design
- Convenient maintenance
- Easy operation
- Measurement Principle: Dual wavelength reflectance photometer and spherical integrator
- Two test modes:  
Normal mode, 60 samples / hour  
Continuous mode, 120 samples / hour
- Memory capacity: 5000 samples
- Low cost, small volume, easy to use
- Cold light source, less interference and long life
- Internal thermal printer, external printer and bar code reader applicable
- Standard serial interface Rs232, parallel interface and PC/2 port
- Display: Back light LCD
- Number of parameters: 10&11
- Tested items: pH, Nitrite, Specific gravity, Ascorbic Acid, Blood, Glucose, Bilirubin, Urobilinogen, Ketone, Leucocytes, Protein
- Work condition: Environmental Temperature: 15-30°
- Dimensions: 290x200x100mm, Weight 2 kg



**NUA -500**

- Strong, fast and accurate urine analyzer.
- Ideal for extensive sample laboratory (Automatic continuous test mode 510 samples/hour)
- Measurement Principle: Dual wavelength reflectance photometry
- Wavelength: 4 LED (470nm, 550nm, 620nm, 720nm)
- Throughput: 510 samples/hour
- Memory capacity: 10000 results
- Easy maintenance design for daily cleaning
- High test speed, ideal for extensive sample laboratory
- LCD back light display
- Internal calibration for sensitivity of strips
- Durable and stable cold light source
- Bar code interface, RS 232, USB
- Power supply: 100~240V AC, 50/60Hz, 35W~50W
- Dimension: 390mm x 340mm x 290mm

**NUA -30**



- Point of Care analysis
- Small and compact, accurate urine analyzer.
- Battery operated - suitable for doctors' offices and on field use.

- Measurement Principle: Dual wavelength reflectance method
- Measuring wavelength: 3LED (550, 627, 720nm)
- Sample supply: manual dipping
- Reaction time: 60 seconds per test, LCD screen
- Data memory: 100 tests; Output: RS-232C
- Smart design and multifunction, Easy operation  
Accurate & reliable test results
- Flexible parameter configuration: pH, Nitrite, Protein, Special Gravity, Blood, Glucose, Bilirubin, Urobilinogen, Ketone, Leucocytes, Ascorbic Acid, Calcium, Creatinine, Microalbumin
- Dimensions: 124x81x36mm, Weight 200 g



## NEOCHECK Urine test strips



HIGH QUALITY, EASY READABLE URINE  
TEST STRIPS FOR FAST AND RELIABLE  
QUALITATIVE RESULTS

- Available for manual reading
- Available for use on NUA Urine analyzer series

- **NEOCHECK Urine reagent test strips** are used for quick determination of Glucose, Protein, pH, Leukocytes, Nitrites, Ketones, Bilirubin, Blood, Urobilinogen, Specific Gravity and Ascorbic Acid (Vitamin C) levels in urine.
- These are the diagnostic reagent strips used by physicians and laboratories (in clinics and hospitals) to perform initial screening for suspected or existing health conditions.
- Simple to use, NEOCHECK reagent strips provide early indications of developing health problems and identify any potential abnormal functions requiring more extensive testing.
- Additionally, routine use is frequently recommended by physicians for monitoring certain existing and chronic health conditions.

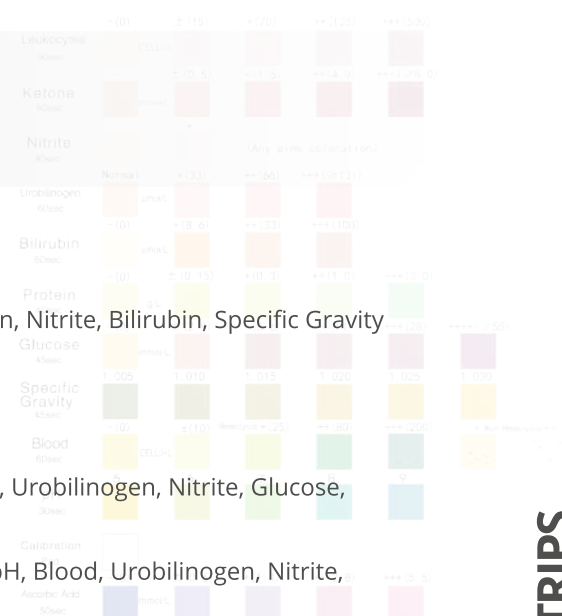
### NEOCHECK 12 Urine Test Strips

### NEOCHECK 14 Urine Test Strips

**NEW**

with Microalbumine and Creatinine

- **NEOCHECK 1:** Glucose
- **NEOCHECK 9:** Ketone, Protein, Glucose, pH, Blood, Urobilinogen, Nitrite, Bilirubin, Specific Gravity
- **NEOCHECK 3:** Protein, Glucose, pH
- **NEOCHECK 3A:** Protein, Glucose, pH, Specific Gravity
- **NEOCHECK 5:** Ketone, Protein, Glucose, pH, Blood
- **NEOCHECK 10:** Leukocytes, Ketone, Bilirubin, Protein, pH, Blood, Urobilinogen, Nitrite, Glucose, Specific Gravity
- **NEOCHECK 10A:** Leukocytes, Ketone, Bilirubin, Protein, Glucose, pH, Blood, Urobilinogen, Nitrite, Specific Gravity
- **NEOCHECK 11:** Leukocytes, Ketone, Bilirubin, Protein, Glucose, pH, Blood, Urobilinogen, Nitrite, Specific Gravity, Ascorbic Acid



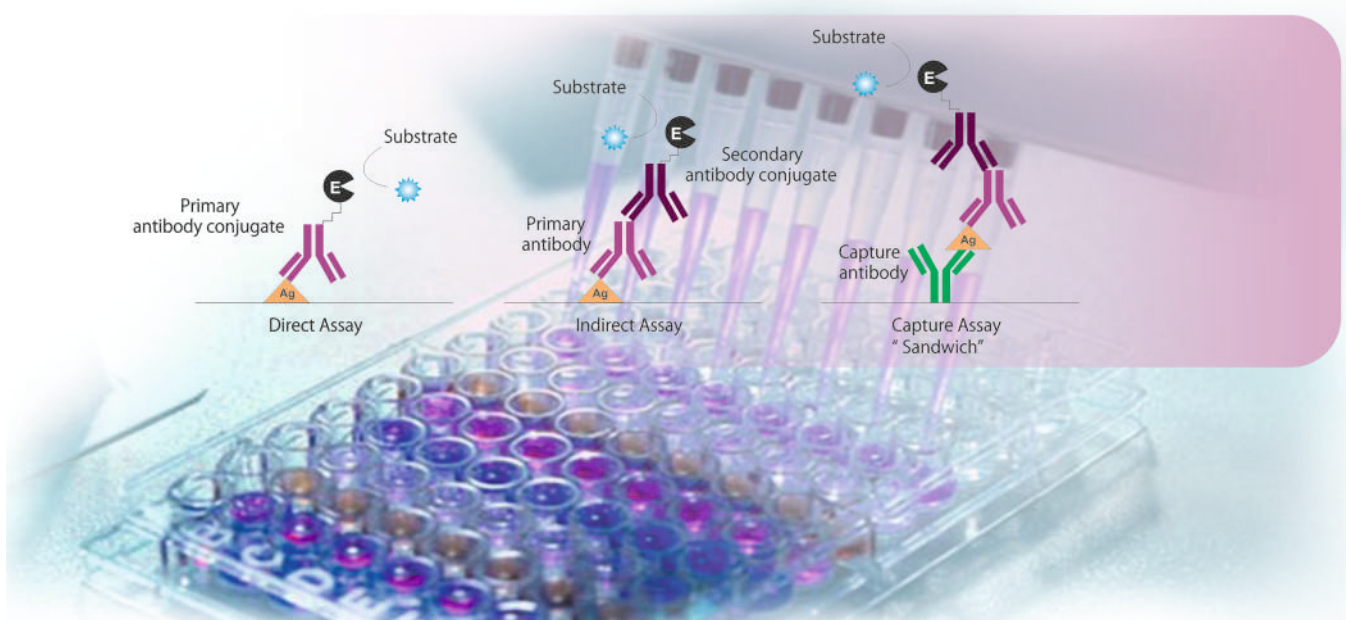
*Ideal Solution  
for your Laboratory*





# ELISA

- An widely used test, enzyme-linked immunosorbent assay, also called ELISA or EIA, is a test that detects and measures antibodies or antigens in blood.
- ELISA kits are used in testing of different kinds of infection diseases, hormones, tumor markers, autoimmune diseases, allergy, transmissible infections, and many other applications in modern laboratory.
- Basis of the test is a microtiter plate (typical 96 tests) coated with antigens or antibodies specific to the detecting parameter. During the incubation of the sample a specific binding of the antibody and antigen occurred and resulted in an immobilization of the detecting parameter.
- The most powerful ELISA assay format is the sandwich assay. This type of capture assay is called a “sandwich” assay because the analyte to be measured is bound between two primary antibodies – the capture antibody and the detection antibody. The sandwich format is used because it is sensitive and robust.





## ELISA MICROPLATE READER

# N-READER

SMALL AND COMPACT

ELISA MICROPLATE READER

INCREASES YOUR EFFICIENCY AND PRECISION

- Reads 96 wells in less than 5 seconds
- Reliable Fiber optics
- Stand alone Analyzer
- Touch screen

- **N-READER** is a microplate reader used in Enzyme-Linked Immunology Assay (ELISA) for the qualitative and quantitative detection of peptides, proteins, antibodies and hormones. This instrument can be used for microplate reading in clinical diagnostic laboratories, blood banks, hospitals, universities, institutes or other academic organizations.

## TECHNICAL SPECIFICATIONS

- Method principle: single wavelength, dual wavelength, two point method, dynamic assay, multiple wavelengths
- Wavelength range: 400~750 nm
- Optical filters: 4 standard filters: 405,450,492,630 nm, maximum 8 filters
- Measurement speed: single wavelength < 3 sec /96 wells, dual wavelength < 9 sec /96 wells
- Measurement range: 0.0000-4.5000 Abs
- Linearity:  $\pm 0.5\%$  or  $< 0.025A$
- Calculation method: Linear, Conic, Semi-log, In, Log-Log, Point-Point, Four\_parametric, Spline
- Blanking: Single well blank, multiple wells blank, rows and columns blank
- Light source: 6V, 10W tungsten halogen lamp; work capacity > 5000 hours
- Resolution: 0.0001A
- Optical density Repeatability:  $< 0.1\%$
- Rows and columns difference:  $< 0.01A$
- Display: built in XP system, touch screen, shows whole microplate results and calibration curve
- Memory: more than 300 test programs, 100.000 test results, 50 images of 96 wells plates.
- Indication stability:  $\pm 0.002A$ ;
- Wavelength indication error:  $\pm 3nm$ ;
- Wavelength repeatability:  $\pm 1.5nm$ ;
- Half-width:  $\leq 12nm$ ;
- Absorbance indication error:  $\pm 0.015A$ ;
- Sensitivity:  $\geq 0.01 \text{ mg / L}$ ;
- Environment power supply: 12 DC (100V-240V wide input voltage range); Temperature: 5-40°C ; Humidity: 10-90%
- Dimensions: 525mm×420mm×260mm; Net Weight: 9 kg





## MAIN FEATURES

- Touch screen with intuitive software
- Built-in computer. Efficient and convenient editing, testing and printing of test results.
- 8-channel Optical system. Zero dispersion monochromatic optical fiber testing system.
- High-precision rail transmissions, enclosing the optical system.
- Scans 96 wells in just 3 seconds
- Self-check and diagnosis system for optical paths and mechanical parts.
- Automatic lamp stand-by system extends the life of light source.
- Built-in MIXER. Shaking function, adjustable shaking speed and time.
- Multiple parameters can be tested on one microplate, up to 12 parameters.
- Easy to use windows interface, suitable for rows and columns' subtraction: free formula input.
- 96 well microplate can be arranged horizontally or longitudinally, set up optionally the start bit and stop bit in testing, auto-coding.
- Qualitative and quantitative parameters, standard curve can be memorized and used directly.
- Creating reports according to microplate No, or sample No; possibility to input experimental items and results in batches.
- Statistical analysis can be done according to the specimen No and name; automatically tracks and analyzes changing trends in data.
- Tests can be saved in MS Excel for further analysis.

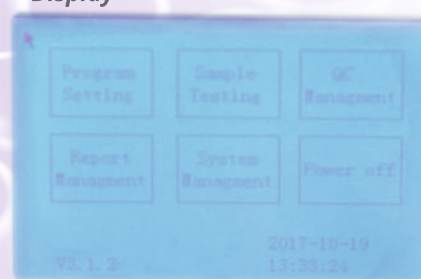
**Microplate well**



**Ports**



**Display**



FULLY AUTOMATED ELISA WASHER

# NW-67

SIMPLIFY YOUR ELISA TESTING!



- Compact, quiet, efficient and portable
- Suitable for various microplates

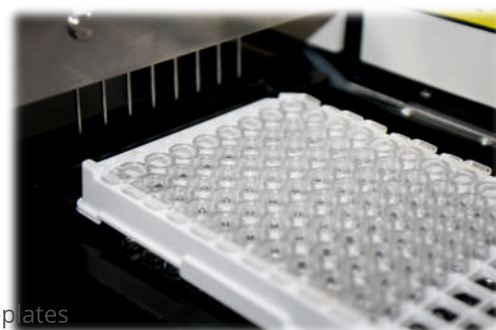
- Performing ELISA assays requires fast and efficient plate washing. Assay reproducibility and consistency between wells are of utmost importance, making automated washing recommended. Accurate dispensing and very fast plate washing, are very important in order to achieve a high throughput and consistency between wells.
- NEOMEDICA's NW-67 ELISA microplate washer will fulfill all your requirements. NW-67 is controlled by microcomputer and configured for washing of both 96- and 48-well plates in ELISA and Chemiluminescence assays which are widely used in clinical diagnostic laboratories, centers for disease prevention and control, research institutions and other organizations.

## TECHNICAL SPECIFICATIONS

- Plate models: flat, round, U-, V- (96-well and 48-well plates)
- Wash modes: plates or strips
- Working mode: continuous working, intermittent loading
- Manifold types: 8- and 12- channel
- Wash times: 1-99 adjustable
- Wash lines: 1-12 can be selected
- Residual volume: <0.2µl/well
- Dispensing uniformity: CV<1.5%
- Dispensing volume: 50-950µl, with adjustable interval of 50µl  
Dispensing volume can be extended to 0-6000µl, with adjustable interval of 25µl
- Number of dispensing channels: 3 channels
- Soaking and shaking time: 0-999 (sec/min/h) adjustable
- Aspiration time: 0.1-9.9 sec adjustable, with interval 0.1 sec
- Pipeline wash time: 0-240 sec adjustable
- Distilled water wash interval (automatically): 0-20 plates
- Display: 3.5" LCD screen with back light
- Alarm function: waste bottle full
- Waste liquid AUTO discharge function
- Fuse: 1A/250AV, Ø5x20
- Power supply: AC220V±10%, 50Hz±1Hz
- Input power: 50 VA
- Environment temperature: 10~40°C
- Relative humidity: <80%
- Atmospheric pressure: 86 Kpa~106Kpa
- Dimensions:  
446 (L)x368 (W)x164mm(H)  
Net weight: 9 kg

## MAIN FEATURES

- High reliability, good washing result, suitable for various micro-plates (flat-, round -, U-, V- bottom 96-well and 48-well plate).
- Easy to name, edit and save 100 different washing programs.
- Any well or strip can be separately washed.
- Aspirating in two positions, residual volume <0.2μl
- Multi-plate can be selected by default settings or manual operation.
- Special Rinse procedure makes easy maintenance and reduces the possibility of contamination between the plates.
- Control technology for pump pressure to avoid clogging in needles.
- Automatic rinsing procedure by distilled water every time the analyzer is switched ON or OFF eliminates the possibility of crystallization in pipes.
- Parameters on every position of different microplates can be saved in different washing programmes.
- Batch modification function for washing programmes, especially for position parameters.
- Alarm function for waste water sensor avoids overflow of the waste bottle.
- 3,5" LCD screen with back light, allows easy operation.
- 4 attached bottles. 2 wash, 1 DH2O, 1 Waste
- 2 wash heads with 12 and 8 wash probes are included in the standard pack
- Special feature in design, preventing aerosol well-to-well contamination
- Bottle for humidity capture, reduced costs of filters



*Microplate well*



*Program panel*



*Waste water sensor*

- **Easy-to-use**
- **Reliable**







**NeoMedica**  
bioscience technology

**State of The Art Technology... At Your Fingertips...**





## POINT OF CARE Analysis

- Point of care (POC) has been integrated into the healthcare system to provide laboratory testing outside of the main laboratory with dedicated laboratory testing space. Some advantages of POC include:

**Efficiency**

**Speed of diagnosis and treatment**

**Expanded testing capabilities**

**Specimen stability and ease of handling**

**Lean process**

**Portable devices**

**Improved patient outcomes**

- NEOMEDICA developed a modern, small, benchtop analyzer **NW-37** intended for quantitative detection of HbA1c and CRP proteins in the human body.
- With efficiency, precision and small blood sample volume needed for analysis, **NW-37** is considered the best Point-of-care analyzer in its class.



## HbA1c

### GLYCATED HEMOGLOBIN TEST KIT

- **Quick and Convenient**
- **Reliable results**
- **Low-cost**



- By measuring glycated haemoglobin (HbA1c), clinicians are able to get an overall picture of average blood sugar levels over a period of three months.  
For people with diabetes this is important since higher HbA1c, means greater the risk of developing diabetes-related complications.

- The **NW-37** analyzer uses boronate affinity chromatography principle to measure glycated hemoglobin from a **5µl** sample taken from a finger prick or venous whole blood just in a few steps.
- Sample results are available within just **7 seconds**, and the whole process of testing can be done in less than **3 minutes**. Under special test mode, it can perform more than 100 tests/hour.
- Calibration RF card is included in each test kit with prerecorded LOT calibration curve.
- Measuring Range: 3~15% (9~140mmol/mol)

#### Within-Run Precision

By testing every sample for 30 times:

SAMPLE	MEAN	CV
Low value	5.5	2.1%
Mid-value	8.6	2.2%
High value	11.3	1.8%

#### Between-Run Precision

By testing every sample for 10 times every day, for 20 days:

SAMPLE	MEAN	CV
Low value	5.5	2.1%
Mid-value	8.6	2.2%
High value	11.3	1.8%

Cartridge insert



## CRP

### C-REACTIVE PROTEIN TEST KIT

- **Quick and Convenient**
- **Reliable results**
- **Low-cost**



- CRP assays are important to: Identify bacteria or virus infection, help control disease conditions, check the effectiveness of antibiotic therapy.
- Bacteria and viruses reproduce quickly and as a result, the ability to detect the presence, scope and nature of a pathogenic infection is critical in point-of-care analysing.
- With NEOMEDICA's C-reactive protein test kit, performed on **NW-37**, you can obtain C-Reactive protein results in just 3 minutes from **5µl** samples of finger prick blood, venous whole blood, blood serum or blood plasma.

- Assay principle: Immuno Chromatography
- Range of detection: 2~220mg/L
- Package: Individual package for every test unit
- Automatic device calibration: CV<8%



### Within-Run Precision

By testing every sample for 30 times:

SAMPLE	MEAN	CV
Low value	9.5	5.4%
Mid-value	50.1	4.9%
High value	99.7	3.6%

### Between-Run Precision

By testing every sample for 10 times every day, for 20 days:

SAMPLE	MEAN	CV
Low value	9.7	5.9%
Mid-value	50.3	4.8%
High value	98.8	5.1%





*Everything for Your Lab*





## VETERINARY PRODUCT LINE

- NEOMEDICA offers a broad range of hematology, biochemistry, urinalysis reagents and analyzers dedicated to delivering the highest quality test results to the animal healthcare professional.
- We realize that ease of use, reliability, and low operating costs are of great importance to veterinarians. We are focused on delivering these qualities with our product lines.





## Phoenix NCC-30Vet

Automated 3-Differential veterinary hematology analyzer (40 samples / hour)

- **Phoenix NCC-30Vet** is a 3-diff hematology analyzer which provides maximal CBC accuracy in analyzing animal blood.
- Supports both whole blood and capillary blood samples in open vial.
- Electrical impedance and Photoelectric colorimetry.
- Linux operation system.



### TECHNICAL SPECIFICATIONS

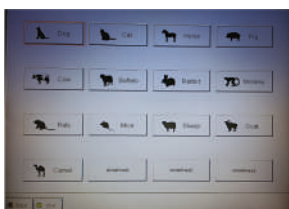
- Principles of operation: WBC/RBC/PLT: Electrical impedance; HGB: Photoelectric Colorimetry
- Parameter: 3-part differentiation of WBC WBC,LYM#, MID#,GRAN#,LYM%,MID%, GRAN%, RBC, HGB,HCT,MCV,MCH,MCHC,RDW-CV,RDW-SD,PLT,MPV, PDW, PCT,P-LCR, P-LCC.
- Sample volume: Whole blood 10uL, Pre-diluted 20uL
- 24 parameters including 3 histograms (WBC,RBC,PLT)
- General Throughput: 40 samples/hour
- 24 hour continuous running, auto stand-by
- Storage: more than 100.000 sample results including histograms
- Dimension of aperture: WBC/RBC/PLT: 80µm
- 57 mm type internal thermal printer
- Calibration and QC program for each animal
- Supported LIS and HIS with HL7 protocol
- Parallel Port and USB for external printer
- Shortcut keys with standard mouse and keyboard
- Interface: Support RS232, standard network port and USB, Bar code reader (optional)
- 3 cyanide-free reagents
- Open tube sampling system
- Automatic cleaning, flush, cauterize
- Optional outprint without measurement delay
- Alarm and warnings: Error messages
- Non-stop work load
- Large color LCD display 10.4" & Linux operation system
- QC Mode: L-J,X,X-R,X-B  
Manual & auto calibration
- Power supply: AC100-240V~50/60Hz
- Dimensions: 650(L)x470(W)x600mm(H)  
Gross Weight: 23 kg

### ANIMAL SPECIES

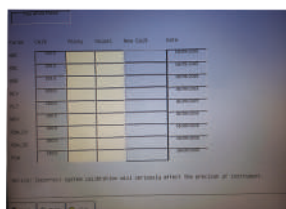
- 13** pre-defined animal types:  
Dog, Horse, Cat, Monkey, Cow, Pig, Buffalo, Rabbit, Camel, Rat, Mouse, Sheep, Goat and

**3** types defined by user

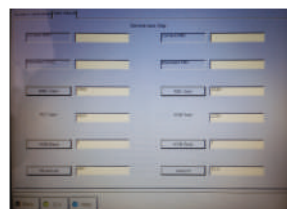
#### 13+3 type of animals



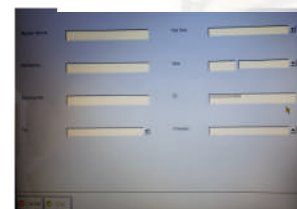
#### Calibration screen



#### Diff. gain for each animal



#### Animal information



#### Linearity Range

WBC:  $0.0 \times 10^9/L - 99.9 \times 10^9/L$   
RBC:  $0.1 \times 10^{12}/L - 7.00 \times 10^{12}/L$   
HGB: 0 - 300 g/L  
PLT:  $0 \times 10^9/L - 999 \times 10^9/L$





**NeoMedica**  
bioscience technology

## 5-DIFF VETERINARY HEMATOLOGY ANALYZER

# Phoenix NCC-60Vet

Automated 5-Differential veterinary hematology analyzer (60 samples / hour)

### with RETIC Analysis

- **Phoenix NCC-60Vet** is a 5-diff hematology analyzer which provides maximal CBC accuracy in analyzing animal blood.
- Supports both whole blood and capillary blood samples in open vial.
- Phoenix NCC-60Vet uses helium-neon laser for the flow cytometry system.
- The complete analysis of cell size, granularity and complexity is gained by calculating different angles via laser scatters.



### TECHNICAL SPECIFICATIONS

- Parameter: 5-part differentiation of WBC  
WBC,LYM%,MON%,NEU%,EOS%,BAS%,LYM#,MON#,  
NEU#,EOS#,BAS#,RBC,HGB,HCT,MCV,MCH,MCHC,  
RDW-CV,RDW-SD,PLT,MPV,PDW,PCT,P\_LCR, P\_LCC,  
RETIC%,RETIC\_ABS,IRF.
- Sample volume: Whole blood 20uL, Pre-diluted 20uL
- 28 hematology parameters
- 2 histograms for RBC and PLT, 2 5-part differential scatter grams, 2 3D stereograms
- Eosinophils and Neutrophils scatter gram
- General Throughput: 60 samples/hour
- 24 hour continuous running, auto stand-by
- Storage: up to 200.000 sample results including scattergrams
- Automatic outprint without delay in analysis
- Calibration and QC program for each animal
- Comprehensive QC program, LIS

### ANIMAL SPECIES

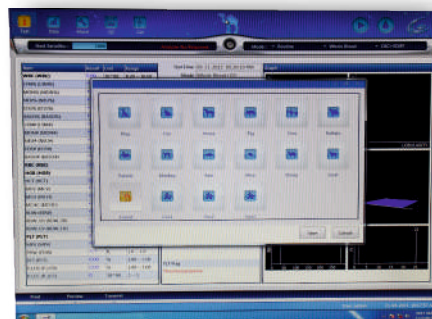
- 13** pre-defined animal types:  
Dog, Horse, Cat, Monkey, Cow, Pig, Buffalo, Rabbit, Camel, Rat, Mouse, Sheep, Goat and
- 3** types defined by user
- 16** pre-defined animal settings

### 4 cyanide-free reagents

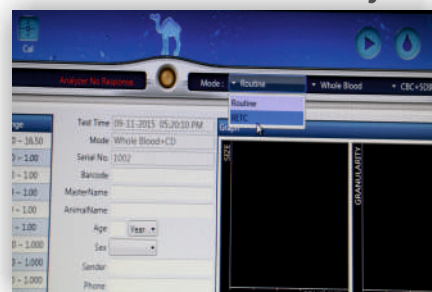
- Windows based software
- PC, Monitor & printer are included
- Display: PC display (14 inch color TFT)
- Open tube sampling system
- Automatic cleaning of sample probe (inside and outside)
- Alarm and warnings: Error messages
- Non-stop work load
- 4 cyanide-free reagents
- Power supply: AC100-240V~50/60Hz
- Dimensions: 598,5(L)x585,5(W)x495mm(H)  
Gross Weight: 70 kg



### Species testing Screen



### RETIC Analysis



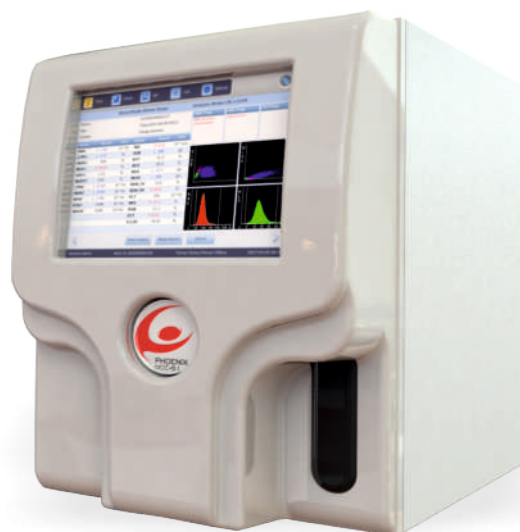


**NeoMedica**  
bioscience technology

## 5-DIFF VETERINARY HEMATOLOGY ANALYZER

# Phoenix NCC-61Vet

Automated 5-Differential veterinary hematology analyzer (60 samples / hour)



with **RETIC Analysis**

Neomedica's ultimate veterinary solution:

Fast and precise 5-diff analysis in the body of a 3-diff device. A compact system that will set new standards in analyzing animal parameters

- **Phoenix NCC-61 VET** is the latest project from Neomedica in the field of veterinary hematology and it has been already launched with huge success.
- Sophisticated flow cytometry technology, intelligent detection and maintenance mechanisms that facilitate handling and troubleshooting figure as key elements in the satisfaction of the customers, whose numbers rise by the day.
- Due to its compact size and weight, small and medium-sized labs in need of fast yet precise 5-differential results comprise the ideal niche for this device. Cyanide-free reagents with long shelf-life and improved packaging enable easy handling and the extremely low consumption makes this analyzer a very favourable and attractive option.

### ANIMAL SPECIES

- 13** pre-defined animal types:  
Dog, Horse, Cat, Monkey, Cow, Pig, Buffalo, Rabbit, Camel, Rat, Mouse, Sheep, Goat and
- 3** types defined by user
- 16** pre-defined animal settings
- 4** cyanide-free reagents  
Diluent, Sheath, Detergent, Lyser

### MAIN ADVANTAGES

- **COMPACT**
- **FLOW CYTOMETRY LASER TECHNOLOGY**
- **RF CARD ensures reliable results**
- **4 Cyanide-free reagents**
- **Multi-dimensional cell classification by laser light**
- **Resistant RBC mode**
- **WIC and WOC for WBC counting**
- **Up to 60 samples per hour throughput**
- **WBC 5 part diff with sheath reagent only**



## TECHNICAL SPECIFICATIONS

- Tested parameters: 34 parameters  
WBC,LYM%,MON%,NEU%,EOS%,BASO%,LYM#,  
MON#,NEU#,EOS#,BAS#,RBC,HGB,HCT,MCV,MCH,  
MCHC,RDW\_CV,RDW\_SD,PLT,MPV,PDW,PCT,P\_LCR,  
P\_LCC,
- 6 Research parameters: ALY%, ALY#, LIC%, LIC#,  
NRBC%, NRBC#  
2 Histograms for RBC and PLT  
2 Scatter grams: 5-part differential scatter gram  
Eosinophils and Neutrophils scatter gram  
2 3D stereograms
- **3 reticulocyte** parameters:  
RETIC%,RETIC\_ABS, IRF
- Principles of operation:  
WBC/DIFF: Flow Cytometry, Semi-conductor,  
Laser light multi-dimensional cell classification  
WBC Analysis: Optical and impedance measurements  
RBC/PLT Analysis: Impedance method  
HGB test: Cyanide-free reagent colorimetry
- Sample: Whole blood 20μL, Pre-diluent 20μL
- Reagents: 4 cyanide free reagents onboard  
Diluent, Sheath, Detergent, Lyser
- Aperture diameter: WBC 100μm,  
RBC/PLT 68μm
- Throughput: up to 60 samples / hour
- Data storage: up to 200.000 results with  
grams
- Controls: LJ, X, XR, XB control mode etc.
- Double WBC counting mode (Impedance  
& Optical)
- Display: 10.4 inch with touch screen
- Error messages and pathological flagging
- Supported languages: EN,RU,ES,FR,PT
- Electric Specifications  
Power Supply: AC 100V~240V, 50/60Hz,  
Fuse 250V/3.15AH
- External printer supported
- Weight: 35kg

## REAGENTS

- Cyanide free reagents with long shelf-life and improved packaging allow easy handling and extremely low consumption.

Coefficient of Variation	Linearity Range
WBC ≤ 2.5%	WBC: 0.0- 99.9x10 <sup>3</sup> /uL
RBC ≤ 2.0%	RBC: 0.00- 9.99x10 <sup>6</sup> /uL
HGB ≤ 1.5%	HGB: 0 - 30 g/dL
MCV ≤ 0.4%	40-150fL
PLT ≤ 5.0%	PLT: 0-999x10 <sup>3</sup> /uL

4 determination methods:

- The **laser light method** for determining the quantity and Five-Part-Diff of WBC
- **Electrical impedance method** for determining the quantity of RBC and PLT
- The **colorimetric method** for determining the content of HGB
- MCV,HCT,RDW,MPV,PDW,MCH,MCHC,PCT are obtained directly by calculating the stored data.

### RF ID Cards



Reliable and Efficient.

Compact, Economical and Perfect.





**NeoMedica**  
bioscience technology

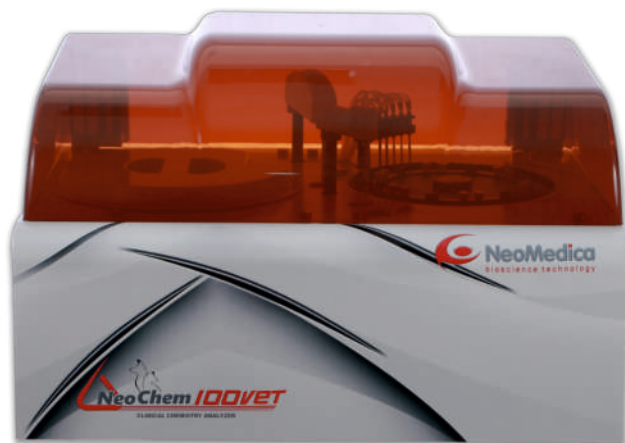
CLINICAL CHEMISTRY ANALYZER FOR VETERINARY USE

## NeoChem 100Vet

Automated Clinical Chemistry analyzer for veterinary use  
(200 samples / hour)

**Highest performance with quality and efficiency For Animals**

- Throughput: Random access, 200 tests/h
- 7-step washing system with hot water
- On-board reagent cooling system
- Fiber optic - optical system
- Collision protection
- Supported LIS Interface



### MAIN ADVANTAGES

- Reagent cooling system
- Automatic cuvettes detection & selection
- Automatic 7-step washing system
- Supported LIS Interface
- Onboard mixer
- Low Water consumption

**MINIMAL MAINTENANCE**  
is reducing your operational costs!

### Highest performance mixer design

- Eliminated cross-contamination
- Optimal homogenization in minimum time

### Accurate sampling

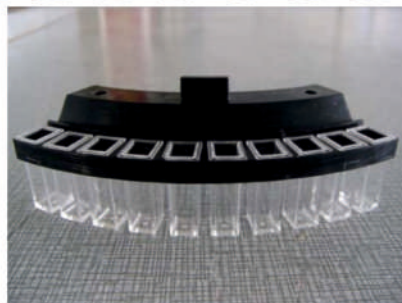
- Liquid level detection
- Collision protection
- Internal and external probe washing
- High quality stepping motor, with minimum 0,1 ul increment

### Ergonomic software

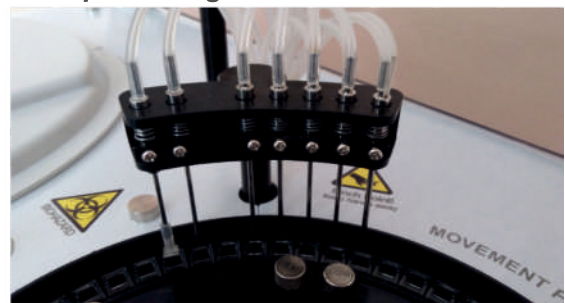
- Species for animals
- Dynamic and real time display for running status



**Low cost reusable cuvettes**



**7-step washing station**



VETERINARY CHEMISTRY ANALYZERS

## TECHNICAL SPECIFICATIONS

- Test Speed: 200 test / hour
- Assay method: End-point, Fixed-time (two point) Kinetic, Colorimetry, Turbidimetry, Two wavelength, Double reagent, multi-standard etc.
- Reagent Tray: 40 barcoded bottles
- Sample tray: 40 sample positions, samples can be placed randomly, including standard, QC, emergency sample
- Original tube or serum cup can be used
- Reagent tray: 40 reagent positions, 1 diluent position, 20ml reagent bottle, with 24-hour peltier refrigerated reagent tray
- Sample volume: 2-50 $\mu$ l, 0.1 $\mu$ l step
- Reagent volume: R1 150 ~ 300 $\mu$ l, R2 10 ~ 150 $\mu$ l, 1 $\mu$ l step
- Reaction volume: 150 ~ 300 $\mu$ l
- Reaction tray: 60 reusable plastic cuvettes
- Reaction temperature: 37 $\pm$ 0.1  $^{\circ}$ C,
- Hot water ensures constant temperature in the reaction rotor
- Reaction cuvette: 5mm $\times$ 6mm $\times$ 25mm, optical path 5mm, metacryll cuvette
- Supported LIS
- 9 wavelengths: 340,405,450,510, 546,578,620, 660, 690 + 2 free
- Optical system: Static optical fiber system multi-wavelength spectrophotometer
- Light source: 12V, 20W long-life halogen lamp or LED optional
- Detecting cycle: 18 seconds
- Integrated bar-code reader
- Data Processing: Editing and storage for more than 300 testing parameters. Patients' information can be stored infinitely.
- Alarms for water & waste, sensors
- Absorbance linearity: 0.0000 ~ 4.0000 Abs
- Wavelength accuracy:  $\pm$ 2nm
- Repeatability: CV  $\leq$  2,0%
- Stability: Within one hour, absorbance change is less than 0.01
- Interface: Instrument / computer: RS-232C, network port, touch screen possible
- QC: Multi QC function, QC diagrams can be stored, displayed and printed; Different QC material can be pre-set up; every test can take 3 different QC material
- Dimensions: 415mm(W) $\times$ 565mm(L) $\times$ 385mm(H)  
Net Weight: 28 kg





## CLINICAL CHEMISTRY REAGENTS FOR VETERINARY USE



- NEOMEDICA DOO offers you a **complete clinical chemistry reagent panel**
- Cost Saving - minimal dead volume and **optimized R1/R2 reagent ratio**
- **Wide range of biochemistry analysis** with several different methods
- **Reliable results** - superior liquid stability, large linearity range, easy to use
- **Original quality controls and calibrators** ensure precise results of analysis
- **Distinctive and modern packing design** - resistant to moisture and wear, adjusted to the customers' needs
- **Application for open biochemistry systems**

### CLINICAL CHEMISTRY REAGENTS

*Wide product range of clinical chemistry reagents for veterinary use*

<b>ACID AND PROSTATIC PHOSPHATASE</b>	Fast Red
<b>ALBUMIN</b>	BCG (Ready to use)
<b>ALKALINE PHOSPHATASE</b>	AMP (IFCC) liq.
<b>ALPHA AMILASE SL</b>	CNPG3 mono
<b>ALT/GPT-SL</b>	IFCC
<b>AST/GOT-SL</b>	IFCC
<b>AMMONIUM UV</b>	GLDH
<b>BILIRUBIN DIRECT</b>	DPD. Colorimetric
<b>BILIRUBIN TOTAL (B)</b>	DPD. Colorimetric
<b>BILIRUBIN (TOTAL AND DIRECT)</b>	DPD. Colorimetric
<b>CALCIUM ARS</b>	Arsenazo mono
<b>CALCIUM</b>	CPC
<b>CHLORIDE</b>	CPC
<b>CHOLESTEROL HDL DIRECT</b>	Enzymatic colorimetric. Liquid
<b>CHOLESTEROL LDL DIRECT</b>	Enzymatic colorimetric. Liquid
<b>CHOLESTEROL HDL PRECIPITATING REAGENT</b>	Precipitant
<b>CHOLESTEROL LDL PRECIPITATING REAGENT</b>	Precipitant
<b>CHOLESTEROL TOTAL SL</b>	CHOD-PAP
<b>CHOLINESTERASE</b>	Butyryl (DGKC)
<b>CK-MB</b>	Immunoinhibition



<b>CK-NAC SL</b>	DGKC-IFCC
<b>COPPER SL</b>	DBP Colorimetric
<b>CREATININE</b>	Jaffe without deproteinization
<b>GAMMA GT</b>	Carboxy substrate
<b>GLUCOSE SL</b>	GOT-POD
<b>HOMOCYSTEINE SL</b>	Enzymatic UV
<b>IRON F</b>	Ferene / Ferrozine
<b>IRON CAB</b>	Chromazurol B
<b>LACTATE</b>	Enzymatic (Colorimetric)
<b>LDH-p SL</b>	Kinetic UV. DGKC. Liquid
<b>MAGNESIUM</b>	Xylidyl Blue
<b>PHOSPHORUS UV</b>	Molybdate
<b>TOTAL PROTEINS</b>	Biuret (redy to use, monoliquid)
<b>PROTEIN (URINE)</b>	Pyrogallol Red
<b>TIBC-UIBC</b>	Precipitation with Mg-carbonate
<b>TRYGLYCERIDES SL</b>	GPO-PAP monoliquid
<b>UREA UV SL</b>	Kinetic Urease - GLDH
<b>URIC ACID SL</b>	Uricase - POD
<b>SODIUM</b>	Mg-Uranylacetate Method
<b>POTASSIUM</b>	TBP-Na Method / Piruvate Kinase
<b>LITHIUM</b>	Enzymatic
<b>ZINC SL</b>	5-Br-PAPS
<b>CRP</b>	Turbidimetry



NEOMEDICA offers Labware, consumables, plastic tubes, maintenance material, washing solutions and all necessary material for laboratory daily work.

Our experts arrange periodical training for our distributors, and our technical and customer support team is online 24/7 for all questions and help.



*Everything for Your Lab*

## ABOUT US

**NEOMEDICA DOO** is manufacturer, and global supplier of medical devices for In Vitro diagnostics since 2000.

Based in Europe, we implement highest standards in essential elements of our products - including manufacture, support in knowledge and effectiveness through response time and good logistics.

With the experience of more than 20 years we can proudly say that we have succeeded in becoming a worldwide recognisable brand and being associated with quality, integrity and excellence.

In a brand new factory, introduced in 2013, diverse products are manufactured with unique purpose - **TO CONTRIBUTE TO HEALTH AROUND THE WORLD.**

### NEOMEDICA DOO

Boulevard Sv Cara Konstantina  
82-86, 18000 Nis, SERBIA, EUROPE  
Tel. +381 (0)18 533 935, 533 936  
Fax +381 (0)18 573 616  
e-mail: [ivd@neomedica.rs](mailto:ivd@neomedica.rs)

#### International Sales

Tel. +381 (0)18 533 935  
Fax +381 (0)18 573 616  
e-mail: [ivd@neomedica.rs](mailto:ivd@neomedica.rs)

#### Domestic Sales

Tel. +381 (0)18 533 935  
Fax +381 (0)18 573 616  
e-mail: [prodaja@neomedica.rs](mailto:prodaja@neomedica.rs)

#### Technical Support

e-mail: [support@neomedica.rs](mailto:support@neomedica.rs)



**You are welcome to visit us**  
**[www.neomedica.rs](http://www.neomedica.rs)**

